

POTEA-Specific Polyclonal antibody

Catalog Number: 20203-1-AP

Basic Information

Catalog Number:

20203-1-AP

Size:

600 µg/ml

Source:

Rabbit

Isotype:

IgG

GenBank Accession Number:

NM_001002920

GeneID (NCBI):

340441

UNIPROT ID:

Q658J7

Full Name:

POTE ankyrin domain family,
member A

Calculated MW:

56 kDa

Purification Method:

Antigen affinity purification

Recommended Dilutions:

IHC 1:50-1:500

IF/ICC 1:50-1:500

Applications

Tested Applications:

IF/ICC, IHC, ELISA

Species Specificity:

human, mouse

Positive Controls:

IHC : mouse ovary tissue, human ovary tissue

IF/ICC : HepG2 cells,

**Note-IHC: suggested antigen retrieval with
TE buffer pH 9.0; (*) Alternatively, antigen
retrieval may be performed with citrate
buffer pH 6.0**

Background Information

POTEA, also named as A26A1 and POTE8, belongs to the POTE family. POTE has an important signaling function in the reproductive system. The antibody is specific to POTEA.

Storage

Storage:

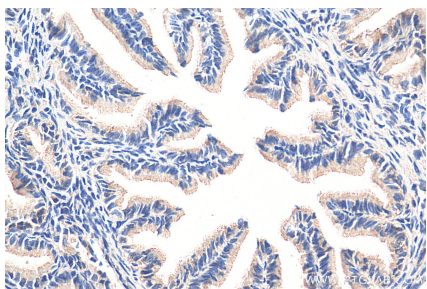
Store at -20°C. Stable for one year after shipment.

Storage Buffer:

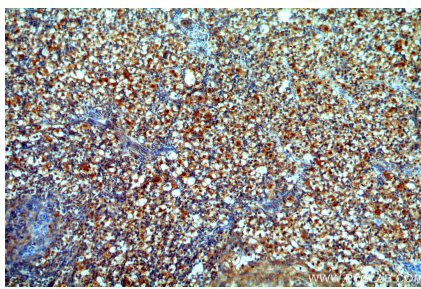
PBS with 0.02% sodium azide and 50% glycerol pH 7.3.

Aliquoting is unnecessary for -20°C storage

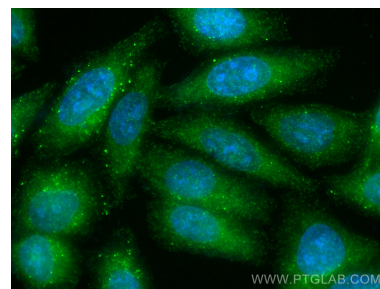
Selected Validation Data



Immunohistochemical analysis of paraffin-embedded mouse ovary tissue slide using 20203-1-AP (POTEA-Specific antibody) at dilution of 1:200 (under 40x lens). Heat mediated antigen retrieval with Tris-EDTA buffer (pH 9.0).



Immunohistochemical analysis of paraffin-embedded human ovary using 20203-1-AP (POTEA-Specific antibody) at dilution of 1:50 (under 10x lens).



Immunofluorescent analysis of (-20°C Methanol) fixed HepG2 cells using POTEA-Specific antibody (20203-1-AP) at dilution of 1:200 and CoraLite®488-Conjugated AffiniPure Goat Anti-Rabbit IgG(H+L).