

For Research Use Only

# STEAP2-Specific Polyclonal antibody



Catalog Number: 20201-1-AP

Featured Product

3 Publications

## Basic Information

**Catalog Number:**

20201-1-AP

**Size:**

600 µg/ml

**Source:**

Rabbit

**Isotype:**

IgG

**GenBank Accession Number:**

NM\_152999

**GeneID (NCBI):**

261729

**UNIPROT ID:**

Q8NFT2

**Full Name:**

six transmembrane epithelial antigen of the prostate 2

**Calculated MW:**

56 kDa

**Observed MW:**

56 kDa

**Purification Method:**

Antigen affinity purification

**Recommended Dilutions:**

WB 1:500-1:1000

## Applications

**Tested Applications:**

WB, ELISA

**Cited Applications:**

WB, IHC

**Species Specificity:**

human, mouse

**Cited Species:**

human

**Positive Controls:**

WB: HEK-293 cells, HeLa cells, DU 145 cells, fetal human brain tissue, mouse kidney tissue

## Background Information

STEAP2, also named as PCANAP1 and STAMP1, belongs to the STEAP family. It is a metalloredoxase that has the ability to reduce both Fe<sup>3+</sup> to Fe<sup>2+</sup> and Cu<sup>2+</sup> to Cu<sup>1+</sup>. STEAP2 uses NAD<sup>+</sup> as acceptor. The antibody is specific to STEAP2.

## Notable Publications

Author	Pubmed ID	Journal	Application
Dong Zhang	36316642	Cancer Biol Ther	WB
Haruki Hasegawa	29940176	Exp Cell Res	WB
Yue Zhu	35436987	Cell Death Dis	WB,IHC

## Storage

**Storage:**

Store at -20°C. Stable for one year after shipment.

**Storage Buffer:**

PBS with 0.02% sodium azide and 50% glycerol pH 7.3.

Aliquoting is unnecessary for -20°C storage

For technical support and original validation data for this product please contact:

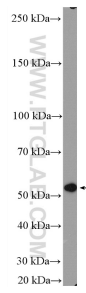
T: 4006900926

E: Proteintech-CN@ptglab.com

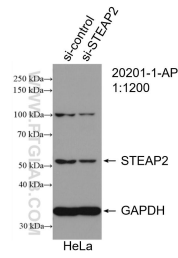
W: ptgcn.com

This product is exclusively available under Proteintech Group brand and is not available to purchase from any other manufacturer.

## Selected Validation Data



HEK-293 cells were subjected to SDS PAGE followed by western blot with 20201-1-AP (STEAP2-Specific antibody) at dilution of 1:600 incubated at room temperature for 1.5 hours.



WB result of STEAP2-Specific antibody (20201-1-AP; 1:600; incubated at room temperature for 1.5 hours) with sh-Control and sh-STEAP2-Specific transfected HeLa cells.