

BIN3 Polyclonal antibody

Catalog Number: 20186-1-AP

Basic Information

Catalog Number:

20186-1-AP

Size:

400 µg/ml

Source:

Rabbit

Isotype:

IgG

Immunogen Catalog Number:

AG14091

GenBank Accession Number:

BC001223

GeneID (NCBI):

55909

UNIPROT ID:

Q9NQY0

Full Name:

bridging integrator 3

Calculated MW:

253 aa, 30 kDa

Observed MW:

25 kDa

Purification Method:

Antigen affinity purification

Recommended Dilutions:

WB 1:500-1:1000

Applications

Tested Applications:

WB, ELISA

Species Specificity:

human, mouse, rat

Positive Controls:

WB : Jurkat cells, A375 cells, HEK-293 cells, HeLa cells, mouse testis tissue

Background Information

BIN3, also named as MEPCE and BCDIN3, belongs to the methyltransferase superfamily. It is an S-adenosyl-L-methionine-dependent methyltransferase that adds a methylphosphate cap at the 5'-end of 7SK snRNA, leading to stabilize it.

Storage

Storage:

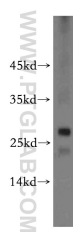
Store at -20°C. Stable for one year after shipment.

Storage Buffer:

PBS with 0.02% sodium azide and 50% glycerol pH 7.3.

Aliquoting is unnecessary for -20°C storage

Selected Validation Data



Jurkat cells were subjected to SDS PAGE followed by western blot with 20186-1-AP (BIN3 antibody) at dilution of 1:500 incubated at room temperature for 1.5 hours.