

For Research Use Only

SLC25A23 Polyclonal antibody

Catalog Number: 20168-1-AP **1 Publications**



Basic Information

Catalog Number:

20168-1-AP

Size:

1200 µg/ml

Source:

Rabbit

Isotype:

IgG

Immunogen Catalog Number:

AG13987

GenBank Accession Number:

BC001656

GeneID (NCBI):

79085

UNIPROT ID:

Q9BV35

Full Name:

solute carrier family 25
(mitochondrial carrier; phosphate
carrier), member 23

Calculated MW:

468 aa, 52 kDa

Observed MW:

49-54 kDa

Purification Method:

Antigen affinity purification

Recommended Dilutions:

WB 1:1000-1:4000

IHC 1:20-1:200

Applications

Tested Applications:

IHC, WB, ELISA

Cited Applications:

IHC

Species Specificity:

human, mouse, rat

Cited Species:

human

**Note-IHC: suggested antigen retrieval with
TE buffer pH 9.0; (*) Alternatively, antigen
retrieval may be performed with citrate
buffer pH 6.0**

Positive Controls:

WB : mouse pancreas tissue, mouse skeletal muscle
tissue, mouse testis tissue, SH-SY5Y cells

IHC : human pancreas tissue,

Background Information

Notable Publications

Author	Pubmed ID	Journal	Application
Ao-ran Liu	36254139	Biomed Res Int	IHC

Storage

Storage:

Store at -20°C. Stable for one year after shipment.

Storage Buffer:

PBS with 0.02% sodium azide and 50% glycerol pH 7.3.

Aliquoting is unnecessary for -20°C storage

For technical support and original validation data for this product please contact:

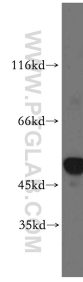
T: 4006900926

E: Proteintech-CN@ptglab.com

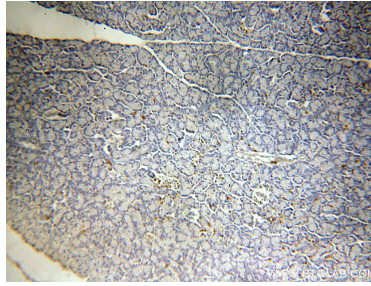
W: ptgcn.com

This product is exclusively available under Proteintech Group brand and is not available to purchase from any other manufacturer.

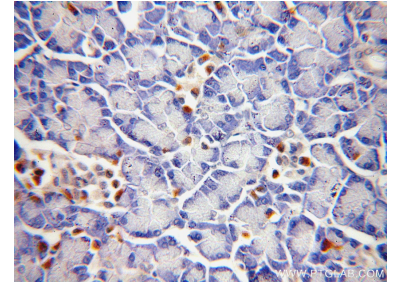
Selected Validation Data



mouse pancreas tissue were subjected to SDS PAGE followed by western blot with 20168-1-AP (SLC25A23 antibody) at dilution of 1:1000 incubated at room temperature for 1.5 hours.



Immunohistochemical analysis of paraffin-embedded human pancreas using 20168-1-AP (SLC25A23 antibody) at dilution of 1:100 (under 10x lens).



Immunohistochemical analysis of paraffin-embedded human pancreas using 20168-1-AP (SLC25A23 antibody) at dilution of 1:100 (under 40x lens).