

KATNAL1 Polyclonal antibody

Catalog Number: 20166-1-AP

Basic Information

Catalog Number:

20166-1-AP

Concentration:

400 ug/ml

Source:

Rabbit

Isotype:

IgG

Immunogen Catalog Number:

AG13960

GenBank Accession Number:

BC000612

GeneID (NCBI):

84056

UNIPROT ID:

Q9BW62

Full Name:

katanin p60 subunit A-like 1

Calculated MW:

490 aa, 55 kDa

Observed MW:

50-55 kDa

Purification Method:

Antigen affinity purification

Recommended Dilutions:

WB 1:2000-1:10000

IP 0.5-4.0 ug for 1.0-3.0 mg of total protein lysate

Applications

Tested Applications:

WB, IP, ELISA

Species Specificity:

human

Positive Controls:

WB : HEK-293 cells, Jurkat cells, HeLa cells

IP : HeLa cells,

Background Information

KATNAL1 belongs to a family of microtubule-severing proteins and contains an N-terminal microtubule interaction and trafficking (MIT) domain, an ATPase AAA-type core domain, and a C-terminal Vps4_C domain. KATNAL1 is involved in regulating microtubule dynamics, which is essential for spermiogenesis and male fertility. It severs microtubules in an ATP-dependent manner, promoting rapid reorganization of cellular microtubule arrays (PMID: 22654668). In neurons, KATNAL1 plays a role in microtubule rearrangement during neuronal migration and process elongation. Additionally, mutations in KATNAL1 have been associated with intellectual disability and microcephaly in humans (PMID: 30448058).

Storage

Storage:

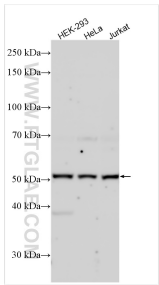
Store at -20°C. Stable for one year after shipment.

Storage Buffer:

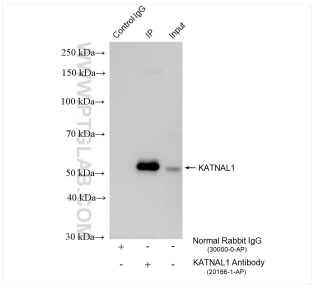
PBS with 0.02% sodium azide and 50% glycerol pH 7.3.

Aliquoting is unnecessary for -20°C storage

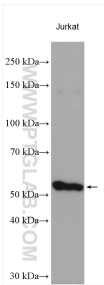
Selected Validation Data



Various lysates were subjected to SDS PAGE followed by western blot with 20166-1-AP (KATNAL1 antibody) at dilution of 1:5000 incubated at room temperature for 1.5 hours.



IP result of anti-KATNAL1 (IP:20166-1-AP, 4ug; Detection:20166-1-AP 1:4000) with HeLa cells lysate 1280 ug.



Jurkat cells were subjected to SDS PAGE followed by western blot with 20166-1-AP (KATNAL1 antibody) at dilution of 1:1000 incubated at room temperature for 1.5 hours.