

# KLHL29 Polyclonal antibody

Catalog Number: 20162-1-AP

## Basic Information

Catalog Number:

20162-1-AP

Size:

180 µg/ml

Source:

Rabbit

Isotype:

IgG

Immunogen Catalog Number:

AG14087

GenBank Accession Number:

BC015667

GeneID (NCBI):

114818

UNIPROT ID:

Q96CT2

Full Name:

kelch-like 29 (Drosophila)

Calculated MW:

875 aa, 94 kDa

Purification Method:

Antigen affinity purification

Recommended Dilutions:

IHC 1:20-1:200

## Applications

Tested Applications:

IHC, ELISA

Species Specificity:

human

Positive Controls:

IHC : human kidney tissue, human brain tissue

**Note-IHC: suggested antigen retrieval with  
TE buffer pH 9.0; (\*) Alternatively, antigen  
retrieval may be performed with citrate  
buffer pH 6.0**

## Background Information

### Storage

Storage:

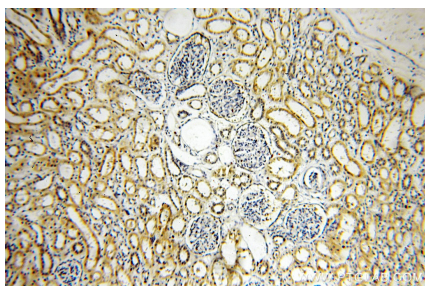
Store at -20°C. Stable for one year after shipment.

Storage Buffer:

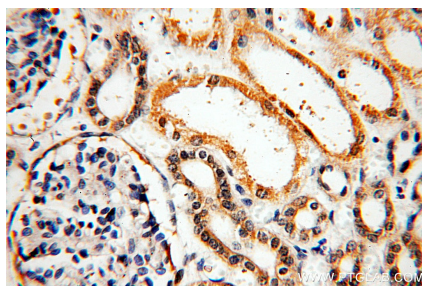
PBS with 0.02% sodium azide and 50% glycerol pH 7.3.

Aliquoting is unnecessary for -20°C storage

## Selected Validation Data



Immunohistochemical analysis of paraffin-embedded human kidney using 20162-1-AP (KLHL29 antibody) at dilution of 1:100 (under 10x lens).



Immunohistochemical analysis of paraffin-embedded human kidney using 20162-1-AP (KLHL29 antibody) at dilution of 1:100 (under 40x lens).