

For Research Use Only

# PLCXD1 Polyclonal antibody, PBS Only

Catalog Number: 20161-1-PBS



## Basic Information

Catalog Number:

20161-1-PBS

Concentration:

1 mg/ml

Source:

Rabbit

Isotype:

IgG

Immunogen Catalog Number:

AG14086

GenBank Accession Number:

BC005028

GeneID (NCBI):

55344

UNIPROT ID:

Q9NUJ7

Full Name:

phosphatidylinositol-specific phospholipase C, X domain containing 1

Calculated MW:

323 aa, 37 kDa

Purification Method:

Antigen affinity purification

## Applications

Tested Applications:

IHC, IF/ICC, Indirect ELISA

Species Specificity:

human, mouse

## Background Information

Phosphatidylinositol-specific phospholipase C (PI-PLC) enzymes comprise a small family of receptor-regulated phosphodiesterases that control many cellular processes by the regulation of cytosolic calcium and/or the activity of several protein kinases. At least three tissue-specific PLCXD isoforms exist in humans, comprising hPLCXD-1, hPLCXD-2 and hPLCXD-3 (PMID: 22732399). Mutations in the PLCXD1 gene are associated with diseases such as Leri-Weill Dyschondrosteosis.

## Storage

Storage:

Store at -80°C.

**The product is shipped with ice packs. Upon receipt, store it immediately at -80°C**

Storage Buffer:

PBS only, pH7.3

For technical support and original validation data for this product please contact:

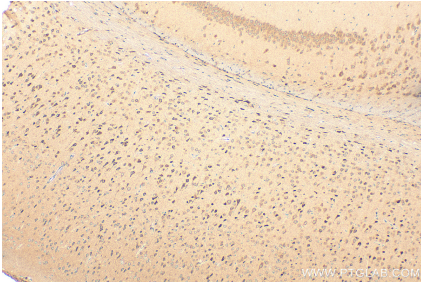
T: 4006900926

E: [Proteintech-CN@ptglab.com](mailto:Proteintech-CN@ptglab.com)

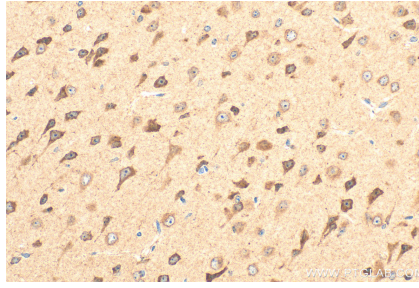
W: [ptgcn.com](http://ptgcn.com)

**This product is exclusively available under Proteintech Group brand and is not available to purchase from any other manufacturer.**

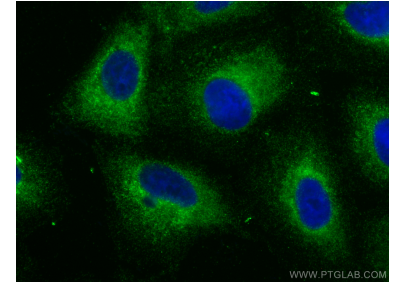
## Selected Validation Data



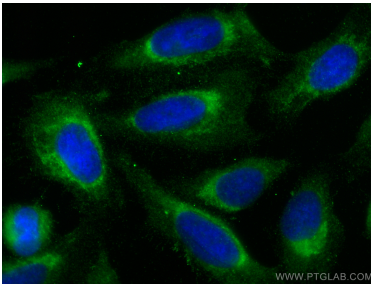
Immunohistochemical analysis of paraffin-embedded mouse brain tissue slide using 20161-1-AP (PLCXD1 antibody) at dilution of 1:200 (under 10x lens). Heat mediated antigen retrieval with Tris-EDTA buffer (pH 9.0). This data was developed using the same antibody clone with 20161-1-PBS in a different storage buffer formulation.



Immunohistochemical analysis of paraffin-embedded mouse brain tissue slide using 20161-1-AP (PLCXD1 antibody) at dilution of 1:200 (under 40x lens). Heat mediated antigen retrieval with Tris-EDTA buffer (pH 9.0). This data was developed using the same antibody clone with 20161-1-PBS in a different storage buffer formulation.



Immunofluorescent analysis of (-20°C Methanol) fixed A549 cells using PLCXD1 antibody (20161-1-AP) at dilution of 1:400 and CoraLite®488-Conjugated AffiniPure Goat Anti-Rabbit IgG(H+L). This data was developed using the same antibody clone with 20161-1-PBS in a different storage buffer formulation.



Immunofluorescent analysis of (-20°C Methanol) fixed U2OS cells using PLCXD1 antibody (20161-1-AP) at dilution of 1:400 and CoraLite®488-Conjugated AffiniPure Goat Anti-Rabbit IgG(H+L). This data was developed using the same antibody clone with 20161-1-PBS in a different storage buffer formulation.