

GLB1L3 Polyclonal antibody

Catalog Number: 20159-1-AP

Basic Information

Catalog Number:

20159-1-AP

Size:

500 µg/ml

Source:

Rabbit

Isotype:

IgG

Immunogen Catalog Number:

AG14083

GenBank Accession Number:

BC011001

GeneID (NCBI):

112937

UNIPROT ID:

Q8NCI6

Full Name:

galactosidase, beta 1-like 3

Calculated MW:

653 aa, 75 kDa

Observed MW:

35 kDa

Purification Method:

Antigen affinity purification

Recommended Dilutions:

WB 1:500-1:2000

Applications

Tested Applications:

WB, ELISA

Species Specificity:

mouse, rat

Positive Controls:

WB : mouse testis tissue, rat testis tissue

Background Information

Glb1l3 is a member of the glycosyl hydrolase 35 family of proteins. These proteins display hydrolase activity catalyzing the cleavage of lactose, as well as galactosyl residues from gangliosides, glycoproteins, and glycosaminoglycans (PMID: 21633714). Glb1l3 has 3 isoforms produced by alternative splicing, which is 75kDa, 36kDa and 35kDa.

Storage

Storage:

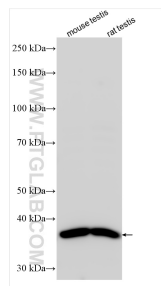
Store at -20°C. Stable for one year after shipment.

Storage Buffer:

PBS with 0.02% sodium azide and 50% glycerol pH 7.3.

Aliquoting is unnecessary for -20°C storage

Selected Validation Data



Various lysates were subjected to SDS PAGE followed by western blot with 20159-1-AP (GLB1L3 antibody) at dilution of 1:1000 incubated at room temperature for 1.5 hours.