

For Research Use Only

# B4GALT6 Polyclonal antibody

Catalog Number: 20148-1-AP

Featured Product

3 Publications



## Basic Information

### Catalog Number:

20148-1-AP

### Size:

400 µg/ml

### Source:

Rabbit

### Isotype:

IgG

### Immunogen Catalog Number:

AG13686

### GenBank Accession Number:

BC074884

### GeneID (NCBI):

9331

### UNIPROT ID:

Q9UBX8

### Full Name:

UDP-Gal:betaGlcNAc beta 1,4-galactosyltransferase, polypeptide 6

### Calculated MW:

382 aa, 45 kDa

### Observed MW:

45-60 kDa

### Purification Method:

Antigen affinity purification

### Recommended Dilutions:

WB 1:500-1:1000

IHC 1:20-1:200

IF/ICC 1:10-1:100

## Applications

### Tested Applications:

WB, IHC, IF/ICC, ELISA

### Cited Applications:

IHC, IF

### Species Specificity:

human, mouse, rat

### Cited Species:

human, mouse

**Note-IHC: suggested antigen retrieval with TE buffer pH 9.0; (\*) Alternatively, antigen retrieval may be performed with citrate buffer pH 6.0**

### Positive Controls:

**WB** : mouse heart tissue, mouse kidney tissue, HEK-293 cells, mouse brain tissue

**IHC** : human colon tissue, human brain tissue

**IF/ICC** : Hela cells,

## Background Information

Beta-1,4-galactosyltransferase 6 (B4GALT6) is a member of the beta 4-galactosyltransferase family that catalyzes the biosynthesis of glycosphingolipids in UDP-dependent manner (PMID: 23744354). B4GALT6 in astrocytes boosts CNS inflammation and promote neurodegeneration during chronic CNS inflammation (PMID: 25216636).

## Notable Publications

Author	Pubmed ID	Journal	Application
Lior Mayo	25216636	Nat Med	IF
Jiřina Procházková	32447053	Biochim Biophys Acta Mol Cell Biol Lipids	IHC
Chenxi Zhao	39442522	Cell Metab	IF

## Storage

### Storage:

Store at -20°C. Stable for one year after shipment.

### Storage Buffer:

PBS with 0.02% sodium azide and 50% glycerol pH 7.3.

Aliquoting is unnecessary for -20°C storage

For technical support and original validation data for this product please contact:

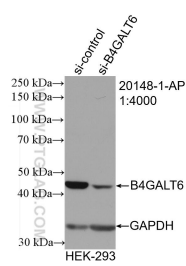
T: 4006900926

E: [Proteintech-CN@ptglab.com](mailto:Proteintech-CN@ptglab.com)

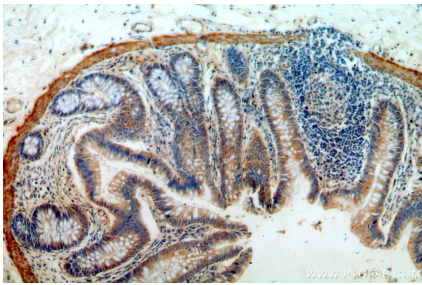
W: [ptgcn.com](http://ptgcn.com)

**This product is exclusively available under Proteintech Group brand and is not available to purchase from any other manufacturer.**

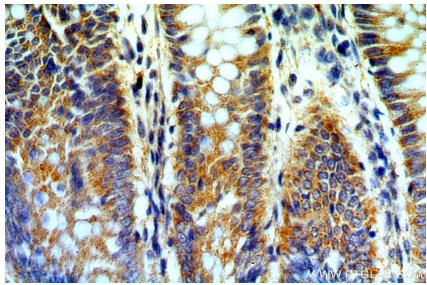
Selected Validation Data



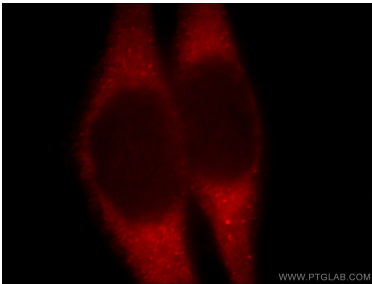
WB result of B4GALT6 antibody (20148-1-AP; 1:4000; incubated at room temperature for 1.5 hours) with sh-Control and sh-B4GALT6 transfected HEK-293 cells.



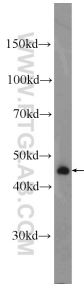
Immunohistochemical analysis of paraffin-embedded human colon using 20148-1-AP (B4GALT6 antibody) at dilution of 1:100 (under 10x lens).



Immunohistochemical analysis of paraffin-embedded human colon using 20148-1-AP (B4GALT6 antibody) at dilution of 1:100 (under 40x lens).



Immunofluorescent analysis of HeLa cells, using B4GALT6 antibody 20148-1-AP at 1:25 dilution and Rhodamine-labeled goat anti-rabbit IgG (red).



mouse heart tissue were subjected to SDS PAGE followed by western blot with 20148-1-AP (B4GALT6 Antibody) at dilution of 1:600 incubated at room temperature for 1.5 hours.