

# CHST13-Specific Polyclonal antibody

Catalog Number: 20141-1-AP

## Basic Information

**Catalog Number:**

20141-1-AP

**Size:**

750 µg/ml

**Source:**

Rabbit

**Isotype:**

IgG

**GenBank Accession Number:**

NM\_152889

**GeneID (NCBI):**

166012

**UNIPROT ID:**

Q8NET6

**Full Name:**

carbohydrate (chondroitin 4)  
sulfotransferase 13

**Calculated MW:**

39 kDa

**Observed MW:**

25 kDa

**Purification Method:**

Antigen affinity purification

**Recommended Dilutions:**

WB 1:500-1:2000

IP 0.5-4.0 µg for 1.0-3.0 mg of total  
protein lysate

IHC 1:20-1:200

IF/ICC 1:10-1:100

## Applications

**Tested Applications:**

WB, IHC, IF/ICC, IP, ELISA

**Species Specificity:**

human, mouse, rat

**Note-IHC: suggested antigen retrieval with  
TE buffer pH 9.0; (\*) Alternatively, antigen  
retrieval may be performed with citrate  
buffer pH 6.0**

**Positive Controls:**

WB: mouse liver tissue,

IP: mouse liver tissue,

IHC: human kidney tissue, human hepatocirrhosis  
tissue

IF/ICC: Hela cells,

## Background Information

CHST13, also named as C4ST3, belongs to the sulfotransferase 2 family. CHST13 catalyzes the transfer of sulfate to position 4 of the N-acetylgalactosamine (GalNAc) residue of chondroitin. Chondroitin sulfate constitutes the predominant proteoglycan present in cartilage and is distributed on the surfaces of many cells and extracellular matrices. CHST13 transfers sulfate to the C4 hydroxyl of beta1,4-linked GalNAc that is substituted with a beta-linked glucuronic acid at the C-3 hydroxyl. No activity toward dermatan. The antibody is specific to CHST13.

## Storage

**Storage:**

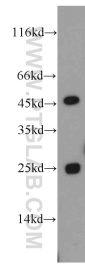
Store at -20°C. Stable for one year after shipment.

**Storage Buffer:**

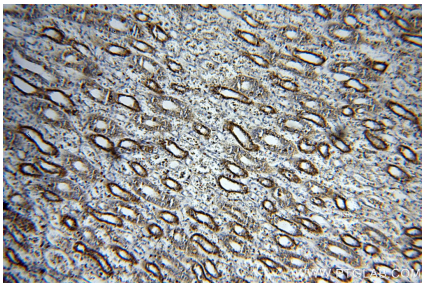
PBS with 0.02% sodium azide and 50% glycerol pH 7.3.

Aliquoting is unnecessary for -20°C storage

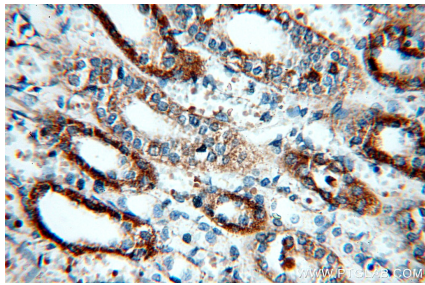
Selected Validation Data



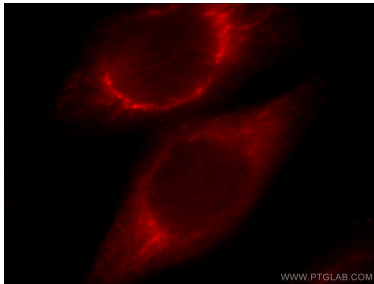
mouse liver tissue were subjected to SDS PAGE followed by western blot with 20141-1-AP (CHST13-Specific antibody) at dilution of 1:500 incubated at room temperature for 1.5 hours.



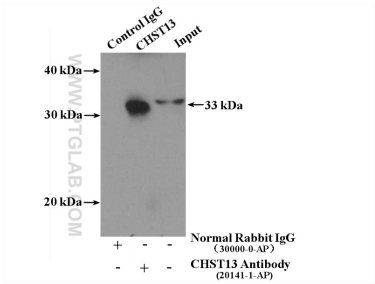
Immunohistochemical analysis of paraffin-embedded human kidney using 20141-1-AP (CHST13-Specific antibody) at dilution of 1:100 (under 10x lens).



Immunohistochemical analysis of paraffin-embedded human kidney using 20141-1-AP (CHST13-Specific antibody) at dilution of 1:100 (under 40x lens).



Immunofluorescent analysis of HeLa cells, using CHST13 antibody 20141-1-AP at 1:25 dilution and Rhodamine-labeled goat anti-rabbit IgG (red).



IP result of anti-CHST13-Specific (IP:20141-1-AP, 4ug; Detection:20141-1-AP 1:500) with mouse liver tissue lysate 4000ug.