

For Research Use Only

# EXD2 Polyclonal antibody

Catalog Number: 20138-1-AP

Featured Product

2 Publications



## Basic Information

### Catalog Number:

20138-1-AP

### Size:

400 µg/ml

### Source:

Rabbit

### Isotype:

IgG

### Immunogen Catalog Number:

AG14090

### GenBank Accession Number:

BC001962

### GeneID (NCBI):

55218

### UNIPROT ID:

Q9NVH0

### Full Name:

exonuclease 3'-5' domain containing 2

### Calculated MW:

70 kDa aa, 56 kDa

### Observed MW:

56 kDa

### Purification Method:

Antigen affinity purification

### Recommended Dilutions:

WB 1:500-1:1000

IP 0.5-4.0 µg for 1.0-3.0 mg of total protein lysate

IHC 1:20-1:200

IF/ICC 1:50-1:500

## Applications

### Tested Applications:

WB, IP, IF/ICC, IHC, ELISA

### Cited Applications:

WB, IF

### Species Specificity:

human, mouse, rat

### Cited Species:

mouse

**Note-IHC: suggested antigen retrieval with TE buffer pH 9.0; (\*) Alternatively, antigen retrieval may be performed with citrate buffer pH 6.0**

### Positive Controls:

WB : mouse lung tissue, mouse brain tissue, mouse pancreas tissue

IP : mouse lung tissue,

IHC : human testis tissue,

IF/ICC : HepG2 cells,

## Background Information

## Notable Publications

Author	Pubmed ID	Journal	Application
Xikui Sun	34926456	Front Cell Dev Biol	WB
Opeyemi Olotu	36624638	Andrology	WB, IF

## Storage

### Storage:

Store at -20°C. Stable for one year after shipment.

### Storage Buffer:

PBS with 0.02% sodium azide and 50% glycerol pH 7.3.

Aliquoting is unnecessary for -20°C storage

For technical support and original validation data for this product please contact:

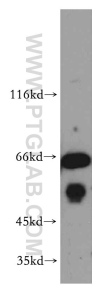
T: 4006900926

E: [Proteintech-CN@ptglab.com](mailto:Proteintech-CN@ptglab.com)

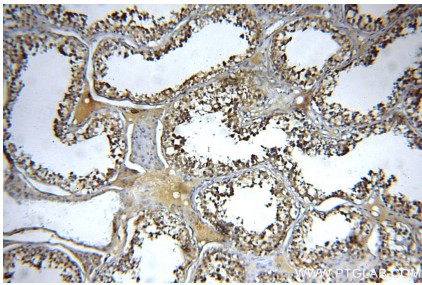
W: [ptgcn.com](http://ptgcn.com)

This product is exclusively available under Proteintech Group brand and is not available to purchase from any other manufacturer.

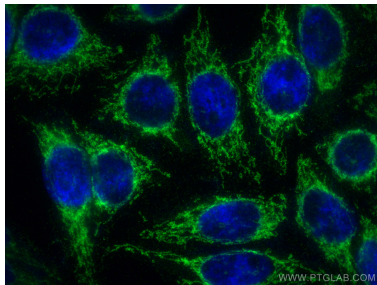
Selected Validation Data



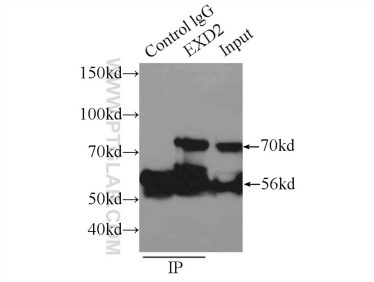
mouse lung tissue were subjected to SDS PAGE followed by western blot with 20138-1-AP (EXD2 antibody) at dilution of 1:300 incubated at room temperature for 1.5 hours.



Immunohistochemical analysis of paraffin-embedded human testis using 20138-1-AP (EXD2 antibody) at dilution of 1:50 (under 10x lens).



Immunofluorescent analysis of (-20°C Ethanol) fixed HepG2 cells using EXD2 antibody (20138-1-AP) at dilution of 1:200 and CoraLite®488-Conjugated AffiniPure Goat Anti-Rabbit IgG(H+L).



IP result of anti-EXD2 (IP:20138-1-AP, 3ug; Detection:20138-1-AP 1:300) with mouse lung tissue lysate 5160ug.