

For Research Use Only

KCTD15 Polyclonal antibody

Catalog Number: 20128-1-AP

Featured Product

2 Publications



Basic Information

Catalog Number:

20128-1-AP

Size:

400 ug/ml

Source:

Rabbit

Isotype:

IgG

Immunogen Catalog Number:

AG13962

GenBank Accession Number:

BC001185

GeneID (NCBI):

79047

UNIPROT ID:

Q96SI1

Full Name:

potassium channel tetramerisation domain containing 15

Calculated MW:

283 aa, 32 kDa

Observed MW:

26 kDa

Purification Method:

Antigen affinity purification

Recommended Dilutions:

WB 1:500-1:1000

IP 0.5-4.0 ug for 1.0-3.0 mg of total protein lysate

IHC 1:50-1:500

Applications

Tested Applications:

WB, IHC, IP, ELISA

Cited Applications:

WB

Species Specificity:

human, mouse, rat

Cited Species:

human

Note-IHC: suggested antigen retrieval with TE buffer pH 9.0; (*) Alternatively, antigen retrieval may be performed with citrate buffer pH 6.0

Positive Controls:

WB : mouse brain tissue, C6 cells, HEK-293 cells, mouse lung tissue

IP : C6 cells,

IHC : mouse spleen tissue,

Background Information

KCTD15 is a member of the KCTD family of proteins, which are involved in various biological processes. KCTD15 plays a role in embryonic development by regulating the neural crest domain. It inhibits neural crest induction by repressing the Wnt/ β -catenin signaling pathway. KCTD15 is involved in the NF- κ B signaling pathway, which is crucial for immune responses and inflammation. Its deregulation can influence the activation of the IKK- β enzyme complex, triggering the NF- κ B pathway. KCTD15's expression levels in peripheral blood cells and leukemia cells suggest its potential as a biomarker for diagnosing and monitoring acute leukemias. Its distinct expression profile in different types of white blood cells highlights its importance in both physiological and pathological processes.

Notable Publications

Author	Pubmed ID	Journal	Application
Eleonora Spiombi	31685809	Oncogenesis	WB
Yini Liao	39413138	Proc Natl Acad Sci U S A	

Storage

Storage:

Store at -20°C. Stable for one year after shipment.

Storage Buffer:

PBS with 0.02% sodium azide and 50% glycerol pH 7.3.

Aliquoting is unnecessary for -20°C storage

For technical support and original validation data for this product please contact:

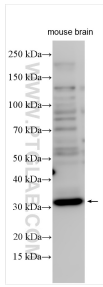
T: 4006900926

E: Proteintech-CN@ptglab.com

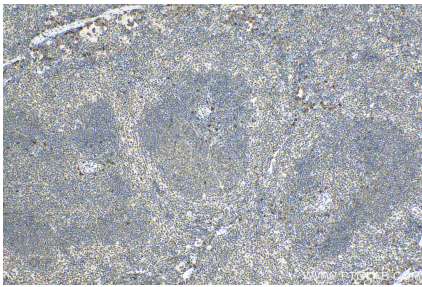
W: ptgcn.com

This product is exclusively available under Proteintech Group brand and is not available to purchase from any other manufacturer.

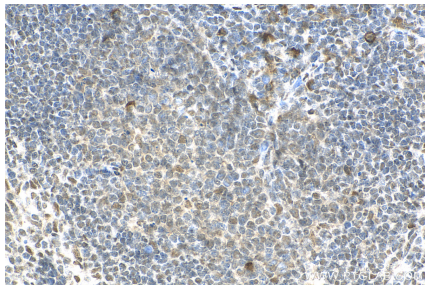
Selected Validation Data



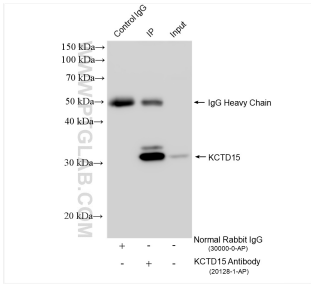
Mouse brain tissues were subjected to SDS PAGE followed by western blot with 20128-1-AP (KCTD15 antibody) at dilution of 1:600 incubated at room temperature for 1.5 hours.



Immunohistochemical analysis of paraffin-embedded mouse spleen tissue slide using 20128-1-AP (KCTD15 antibody) at dilution of 1:200 (under 10x lens). Heat mediated antigen retrieval with Tris-EDTA buffer (pH 9.0).



Immunohistochemical analysis of paraffin-embedded mouse spleen tissue slide using 20128-1-AP (KCTD15 antibody) at dilution of 1:200 (under 40x lens). Heat mediated antigen retrieval with Tris-EDTA buffer (pH 9.0).



IP result of anti-KCTD15 (IP:20128-1-AP, 4ug; Detection:20128-1-AP 1:500) with C6 cells lysate 1960 ug.