

For Research Use Only

# RMC1 Polyclonal antibody

Catalog Number: 20111-1-AP



## Basic Information

**Catalog Number:**

20111-1-AP

**Concentration:**

600 ug/ml

**Source:**

Rabbit

**Isotype:**

IgG

**Immunogen Catalog Number:**

AG13904

**GenBank Accession Number:**

BC002950

**GeneID (NCBI):**

29919

**UNIPROT ID:**

Q96DM3

**Full Name:**

chromosome 18 open reading frame 8

**Calculated MW:**

657 aa, 75 kDa

**Observed MW:**

75-80 kDa

**Purification Method:**

Antigen affinity purification

**Recommended Dilutions:**

IP 0.5-4.0 ug for 1.0-3.0 mg of total protein lysate

## Applications

**Tested Applications:**

IP, ELISA

**Species Specificity:**

human

**Positive Controls:**

IP : MCF-7 cells,

## Background Information

### Storage

**Storage:**

Store at -20°C. Stable for one year after shipment.

**Storage Buffer:**

PBS with 0.02% sodium azide and 50% glycerol

Aliquoting is unnecessary for -20°C storage

For technical support and original validation data for this product please contact:

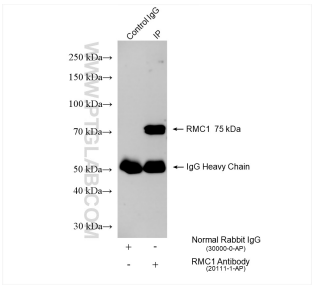
T: 4006900926

E: [Proteintech-CN@ptglab.com](mailto:Proteintech-CN@ptglab.com)

W: [ptgcn.com](http://ptgcn.com)

This product is exclusively available under Proteintech Group brand and is not available to purchase from any other manufacturer.

# Selected Validation Data



IP result of anti-RMC1 (IP:20111-1-AP, 4ug;  
Detection:20111-1-AP 1:600) with MCF-7 cells  
lysate 1120 ug.