

For Research Use Only

ACTR10 Polyclonal antibody

Catalog Number: 20101-1-AP

Featured Product

4 Publications



Basic Information

Catalog Number:

20101-1-AP

Size:

350 µg/ml

Source:

Rabbit

Isotype:

IgG

Immunogen Catalog Number:

AG13612

GenBank Accession Number:

BC011997

GeneID (NCBI):

55860

UNIPROT ID:

Q9NZ32

Full Name:

actin-related protein 10 homolog (S. cerevisiae)

Calculated MW:

417 aa, 46 kDa

Observed MW:

46 kDa

Purification Method:

Antigen affinity purification

Recommended Dilutions:

WB 1:500-1:1000

IP 0.5-4.0 µg for 1.0-3.0 mg of total protein lysate

IHC 1:20-1:200

IF 1:10-1:100

Applications

Tested Applications:

IF/ICC, IHC, IP, WB, ELISA

Cited Applications:

WB

Species Specificity:

human, mouse, rat

Cited Species:

human, Monkey, mouse, rat

Note-IHC: suggested antigen retrieval with TE buffer pH 9.0; (*) Alternatively, antigen retrieval may be performed with citrate buffer pH 6.0

Positive Controls:

WB : mouse brain tissue,

IP : mouse brain tissue,

IHC : human hepatocirrhosis tissue,

IF : HepG2 cells,

Background Information

Notable Publications

| Author | Pubmed ID | Journal | Application |
|------------------|-----------|--------------------------|-------------|
| Amy L Herbert | 29073112 | Proc Natl Acad Sci U S A | WB |
| Ting-Yu Yeh | 22918948 | Mol Biol Cell | WB |
| Md Golam Sharoar | 34371284 | Neurobiol Aging | WB |

Storage

Storage:

Store at -20°C. Stable for one year after shipment.

Storage Buffer:

PBS with 0.02% sodium azide and 50% glycerol pH 7.3.

Aliquoting is unnecessary for -20°C storage

For technical support and original validation data for this product please contact:

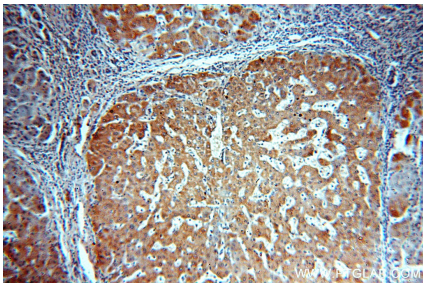
T: 4006900926

E: Proteintech-CN@ptglab.com

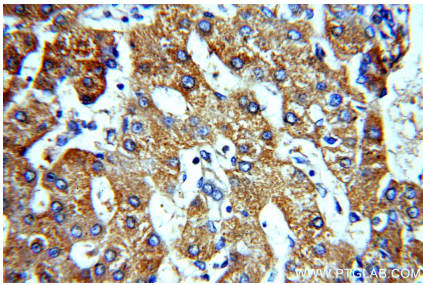
W: ptgcn.com

This product is exclusively available under Proteintech Group brand and is not available to purchase from any other manufacturer.

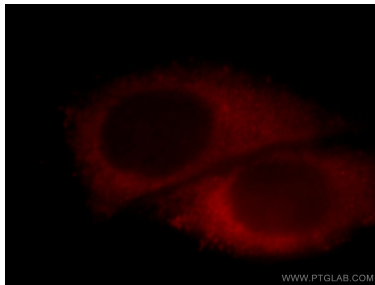
Selected Validation Data



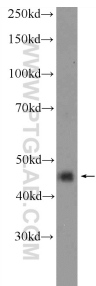
Immunohistochemical analysis of paraffin-embedded human hepatocirrhosis using 20101-1-AP (ACTR10 antibody) at dilution of 1:100 (under 10x lens).



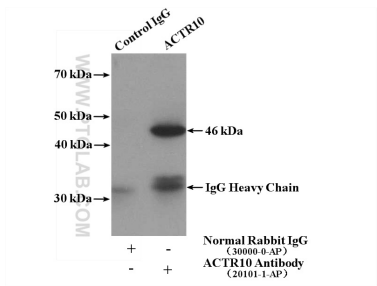
Immunohistochemical analysis of paraffin-embedded human hepatocirrhosis using 20101-1-AP (ACTR10 antibody) at dilution of 1:100 (under 40x lens).



Immunofluorescent analysis of HepG2 cells, using ACTR10 antibody 20101-1-AP at 1:25 dilution and Rhodamine-labeled goat anti-rabbit IgG (red).



mouse brain tissue were subjected to SDS PAGE followed by western blot with 20101-1-AP (ACTR10 Antibody) at dilution of 1:600 incubated at room temperature for 1.5 hours.



IP result of anti-ACTR10 (IP:20101-1-AP, 4ug; Detection:20101-1-AP 1:300) with mouse brain tissue lysate 4000ug.