

CPNE9-Specific Polyclonal antibody

Catalog Number: 20098-1-AP

Basic Information

Catalog Number:

20098-1-AP

Size:

240 µg/ml

Source:

Rabbit

Isotype:

IgG

GenBank Accession Number:

NM_153635

GeneID (NCBI):

151835

UNIPROT ID:

Q8IYJ1

Full Name:

copine family member IX

Calculated MW:

62 kDa

Observed MW:

56 kDa

Purification Method:

Antigen affinity purification

Recommended Dilutions:

WB 1:200-1:1000

Applications

Tested Applications:

WB, ELISA

Species Specificity:

human, mouse, rat

Positive Controls:

WB : mouse brain tissue,

Background Information

Copines are a family of evolutionarily conserved calcium-dependent phospholipid-binding proteins (PMID: 9430674). They contain two Ca(2+)- and phospholipid-binding domains known as C2 domains. Copines are potentially involved in regulating membrane trafficking and in protein-protein interactions. CPNE9, also named as KIAA4217, belongs to the copine family. This antibody is specific to CPNE9.

Storage

Storage:

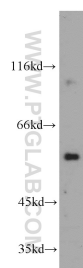
Store at -20°C. Stable for one year after shipment.

Storage Buffer:

PBS with 0.02% sodium azide and 50% glycerol pH 7.3.

Aliquoting is unnecessary for -20°C storage

Selected Validation Data



mouse brain tissue were subjected to SDS PAGE followed by western blot with 20098-1-AP (CPNE9-Specific antibody) at dilution of 1:200 incubated at room temperature for 1.5 hours.