

GAB3-Specific Polyclonal antibody

Catalog Number: 20089-1-AP

Basic Information

Catalog Number:

20089-1-AP

Size:

600 µg/ml

Source:

Rabbit

Isotype:

IgG

GenBank Accession Number:

NM_001081573

GeneID (NCBI):

139716

UNIPROT ID:

Q8WWW8

Full Name:

GRB2-associated binding protein 3

Calculated MW:

66 kDa

Observed MW:

60-66 kDa

Purification Method:

Antigen affinity purification

Recommended Dilutions:

WB 1:500-1:1000

IP 0.5-4.0 µg for 1.0-3.0 mg of total protein lysate

IHC 1:50-1:500

IF/ICC 1:50-1:500

Applications

Tested Applications:

WB, IHC, IF/ICC, IP, ELISA

Species Specificity:

human, mouse, rat

Note-IHC: suggested antigen retrieval with TE buffer pH 9.0; (*) Alternatively, antigen retrieval may be performed with citrate buffer pH 6.0

Positive Controls:

WB : mouse brain tissue, HepG2 cells, MCF-7 cells

IP : MCF-7 cells,

IHC : human liver cancer tissue,

IF/ICC : MCF-7 cells,

Background Information

GAB3 belongs to the GAB family. GAB3 interacts with PIK3R/p85, SHP2 and GRAP2/MONA. It may interact with Grb2. The antibody is specific to GAB3.

Storage

Storage:

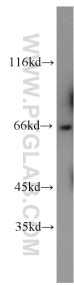
Store at -20°C. Stable for one year after shipment.

Storage Buffer:

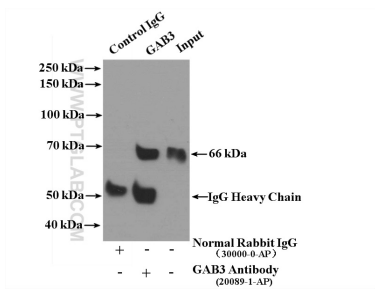
PBS with 0.02% sodium azide and 50% glycerol pH 7.3.

Aliquoting is unnecessary for -20°C storage

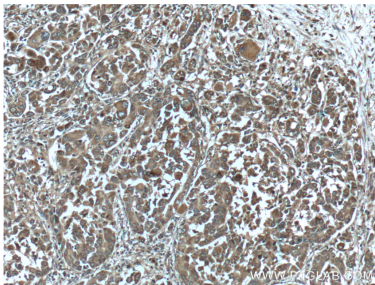
Selected Validation Data



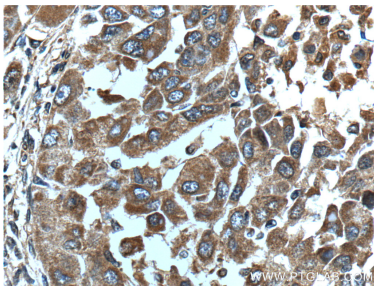
mouse brain tissue were subjected to SDS PAGE followed by western blot with 20089-1-AP (GAB3-Specific antibody) at dilution of 1:500 incubated at room temperature for 1.5 hours.



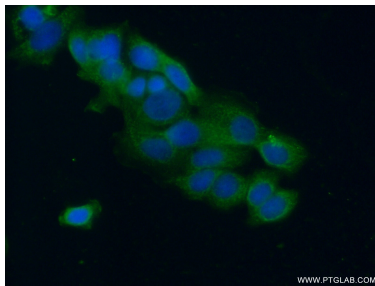
IP result of anti-GAB3-Specific (IP:20089-1-AP, 4ug; Detection:20089-1-AP 1:2000) with MCF-7 cells lysate 3200ug.



Immunohistochemical analysis of paraffin-embedded human liver cancer tissue slide using 20089-1-AP (GAB3-Specific Antibody) at dilution of 1:200 (under 10x lens).



Immunohistochemical analysis of paraffin-embedded human liver cancer tissue slide using 20089-1-AP (GAB3-Specific Antibody) at dilution of 1:200 (under 40x lens).



Immunofluorescent analysis of (-20℃ Ethanol) fixed MCF-7 cells using 20089-1-AP (GAB3-Specific antibody) at dilution of 1:50 and Alexa Fluor 488-conjugated AffiniPure Goat Anti-Rabbit IgG(H+L).