

For Research Use Only

GPR101-Specific Polyclonal antibody



Catalog Number: 20074-1-AP

Basic Information

Catalog Number:

20074-1-AP

Size:

173 µg/ml

Source:

Rabbit

Isotype:

IgG

GenBank Accession Number:

NM_054021

GeneID (NCBI):

83550

UNIPROT ID:

Q96P66

Full Name:

G protein-coupled receptor 101

Calculated MW:

57 kDa

Observed MW:

57 kDa

Purification Method:

Antigen affinity purification

Recommended Dilutions:

WB 1:500-1:1000

Applications

Tested Applications:

FC, WB, ELISA

Species Specificity:

human, monkey

Positive Controls:

WB : HEK-293 cells, COS-7 cells

Background Information

GPR101, also named as GPCR6, belongs to the G-protein coupled receptor 1 family. It is an orphan receptor. This antibody is specific to GPR101.

Storage

Storage:

Store at -20°C. Stable for one year after shipment.

Storage Buffer:

PBS with 0.02% sodium azide and 50% glycerol pH 7.3.

Aliquoting is unnecessary for -20°C storage

For technical support and original validation data for this product please contact:

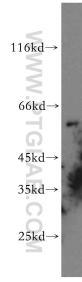
T: 4006900926

E: Proteintech-CN@ptglab.com

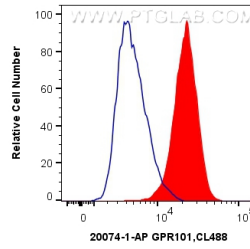
W: ptgcn.com

This product is exclusively available under Proteintech Group brand and is not available to purchase from any other manufacturer.

Selected Validation Data



HEK-293 cells were subjected to SDS PAGE followed by western blot with 20074-1-AP (GPR101-Specific antibody) at dilution of 1:300 incubated at room temperature for 1.5 hours.



1×10^6 HEK-293 cells were intracellularly stained with 0.2 μ g Anti-Human GPR101-Specific (20074-1-AP) and CoraLite® 488-Conjugated AffiniPure Goat Anti-Rabbit IgG(H+L) at dilution 1:1000 (red), or 0.2 μ g Control Antibody. Cells were fixed with 4% PFA and permeabilized with Flow Cytometry Perm Buffer (PF00011-C).