

For Research Use Only

# CDH24 Polyclonal antibody, PBS Only

Catalog Number:20058-1-PBS



## Basic Information

**Catalog Number:**

20058-1-PBS

**Concentration:**

1 mg/ml

**Source:**

Rabbit

**Isotype:**

IgG

**GenBank Accession Number:**

NM\_022478

**GeneID (NCBI):**

64403

**UNIPROT ID:**

Q86UP0

**Full Name:**

cadherin-like 24

**Calculated MW:**

88 kDa

**Observed MW:**

88 kDa

**Purification Method:**

Antigen affinity purification

## Applications

**Tested Applications:**

WB, Indirect ELISA

**Species Specificity:**

human, mouse, rat

## Background Information

CDH24, also named as CDH11L, is a member of Cadherins which are calcium dependent cell adhesion proteins. Cadherine preferentially interact with themselves in a homophilic manner in connecting cells; cadherins may thus contribute to the sorting of heterogeneous cell types. Cadherin-24 mediates strong cell-cell adhesion.

## Storage

**Storage:**

Store at -80°C.

**The product is shipped with ice packs. Upon receipt, store it immediately at -80°C**

**Storage Buffer:**

PBS only, pH7.3

For technical support and original validation data for this product please contact:

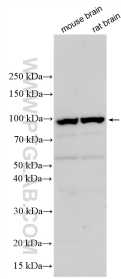
T: 4006900926

E: [Proteintech-CN@ptglab.com](mailto:Proteintech-CN@ptglab.com)

W: [ptgcn.com](http://ptgcn.com)

**This product is exclusively available under Proteintech Group brand and is not available to purchase from any other manufacturer.**

## Selected Validation Data



Various lysates were subjected to SDS PAGE followed by western blot with 20058-1-AP (CDH24 antibody) at dilution of 1:3000 incubated at room temperature for 1.5 hours. This data was developed using the same antibody clone with 20058-1-PBS in a different storage buffer formulation.