

For Research Use Only

CDH26 Polyclonal antibody

Catalog Number: 20057-1-AP

Featured Product

1 Publications



Basic Information

Catalog Number:

20057-1-AP

Size:

600 ug/ml

Source:

Rabbit

Isotype:

IgG

GenBank Accession Number:

NM_021810

GeneID (NCBI):

60437

UNIPROT ID:

Q8IXH8

Full Name:

cadherin-like 26

Calculated MW:

95 kDa

Observed MW:

18-22 kDa, 95-100 kDa

Purification Method:

Antigen affinity purification

Recommended Dilutions:

WB 1:1000-1:8000

IF-P 1:50-1:500

IF/ICC 1:200-1:800

Applications

Tested Applications:

WB, IF/ICC, IF-P, ELISA

Cited Applications:

WB, IF

Species Specificity:

human

Cited Species:

human

Positive Controls:

WB : A549 cells, T-47D cells, HEK-293 cells, MCF-7 cells

IF-P : mouse liver tissue,

IF/ICC : MCF-7 cells,

Background Information

CDH26, also named VR20, is a member of cadherins which are calcium-dependent cell adhesion proteins. Cadherins preferentially interact with themselves in a homophilic manner in connecting cells. Cadherins may thus contribute to the sorting of heterogeneous cell types. CDH26 produces 4 isoforms through alternative splicing, with molecular weights of 13, 18, 92, and 95 kDa, respectively.

Notable Publications

Author	Pubmed ID	Journal	Application
Marrah E Lachowicz-Scroggins	29449961	Cell Discov	WB,IF

Storage

Storage:

Store at -20°C. Stable for one year after shipment.

Storage Buffer:

PBS with 0.02% sodium azide and 50% glycerol pH 7.3.

Aliquoting is unnecessary for -20°C storage

For technical support and original validation data for this product please contact:

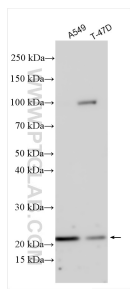
T: 4006900926

E: Proteintech-CN@ptglab.com

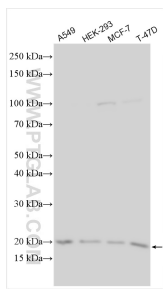
W: ptgcn.com

This product is exclusively available under Proteintech Group brand and is not available to purchase from any other manufacturer.

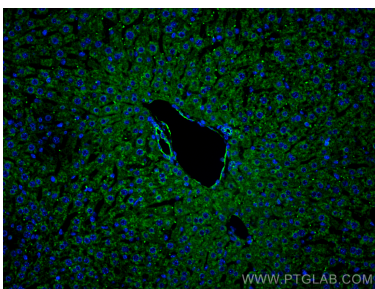
Selected Validation Data



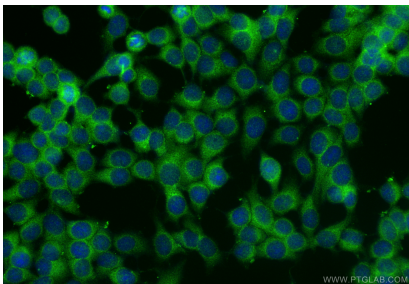
Various lysates were subjected to SDS PAGE followed by western blot with 20057-1-AP (CDH26 antibody) at dilution of 1:2000 incubated at room temperature for 1.5 hours.



Various lysates were subjected to SDS PAGE followed by western blot with 20057-1-AP (CDH26 antibody) at dilution of 1:4000 incubated at room temperature for 1.5 hours.



Immunofluorescent analysis of (4% PFA) fixed paraffin-embedded mouse liver tissue using CDH26 antibody (20057-1-AP) at dilution of 1:200 and CoraLite®488-Conjugated Goat Anti-Rabbit IgG(H+L) (SA00013-2). Heat mediated antigen retrieval with Tris-EDTA buffer (pH 9.0).



Immunofluorescent analysis of (-20°C Methanol) fixed MCF-7 cells using CDH26 antibody (20057-1-AP) at dilution of 1:400 and CoraLite®488-Conjugated Goat Anti-Rabbit IgG(H+L) (SA00013-2).