

For Research Use Only

MPC2 Polyclonal antibody

Catalog Number: 20049-1-AP

15 Publications



Basic Information

Catalog Number:

20049-1-AP

Concentration:

850 ug/ml

Source:

Rabbit

Isotype:

IgG

GenBank Accession Number:

NM_015415

GeneID (NCBI):

25874

UNIPROT ID:

O95563

Full Name:

brain protein 44

Calculated MW:

14 kDa

Observed MW:

18-20 kDa

Purification Method:

Antigen affinity purification

Recommended Dilutions:

WB 1:500-1:2000

IHC 1:50-1:500

IF/ICC 1:50-1:500

Applications

Tested Applications:

WB, IHC, IF/ICC, ELISA

Cited Applications:

WB, IHC, IF

Species Specificity:

human, mouse, rat

Cited Species:

human, mouse, rat

Note-IHC: suggested antigen retrieval with TE buffer pH 9.0; (*) Alternatively, antigen retrieval may be performed with citrate buffer pH 6.0

Positive Controls:

WB : HEK-293T cells, mouse brain tissue, LNCaP cells, PC-3 cells

IHC : mouse heart tissue,

IF/ICC : HepG2 cells,

Background Information

BRP44 belongs to the UPF0041 (O-44) family. The antibody is specific to BRP44.

Notable Publications

Author	Pubmed ID	Journal	Application
Jun Feng	31606382	Life Sci	IF
Yue Wang	35580702	Brain Res Bull	WB,IF
Ridhima Gomkale	32142709	Curr Biol	WB

Storage

Storage:

Store at -20°C. Stable for one year after shipment.

Storage Buffer:

PBS with 0.02% sodium azide and 50% glycerol, pH7.3

Aliquoting is unnecessary for -20°C storage

For technical support and original validation data for this product please contact:

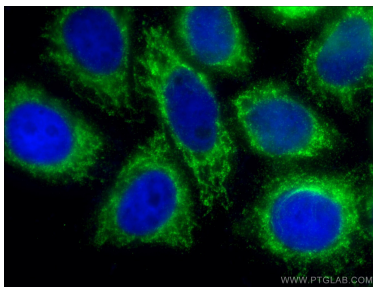
T: 4006900926

E: Proteintech-CN@ptglab.com

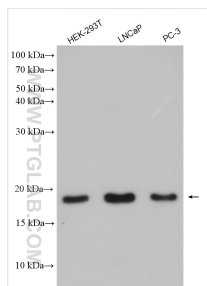
W: ptgcn.com

This product is exclusively available under Proteintech Group brand and is not available to purchase from any other manufacturer.

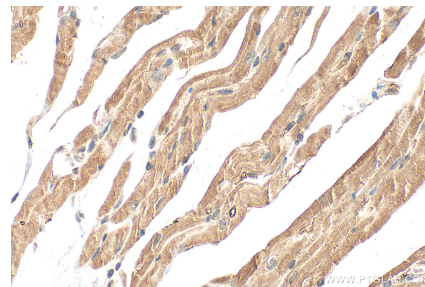
Selected Validation Data



Immunofluorescent analysis of (-20°C Ethanol) fixed HepG2 cells using 20049-1-AP (MPC2 antibody) at dilution of 1:50 and Alexa Fluor 488-conjugated AffiniPure Goat Anti-Rabbit IgG(H+L).



HEK-293T cells were subjected to SDS PAGE followed by western blot with 20049-1-AP (MPC2 antibody) at dilution of 1:1000 incubated at room temperature for 1.5 hours.



Immunohistochemical analysis of paraffin-embedded mouse heart tissue slide using 20049-1-AP (MPC2 antibody) at dilution of 1:200 (under 40x lens). Heat mediated antigen retrieval with Tris-EDTA buffer (pH 9.0).