

# LPHN2 Polyclonal antibody

Catalog Number: 20043-1-AP

## Basic Information

Catalog Number:	20043-1-AP	GenBank Accession Number:	NM_012302	Purification Method:	Antigen affinity purification
Size:	450 µg/ml	GeneID (NCBI):	23266	Recommended Dilutions:	IHC 1:50-1:500
Source:	Rabbit	UNIPROT ID:	O95490		IF-P 1:50-1:500
Isotype:	IgG	Full Name:	latrophilin 2		
		Calculated MW:	163 kDa		

## Applications

### Tested Applications:

IHC, IF-P, ELISA

### Species Specificity:

human, mouse

### Positive Controls:

IHC : mouse cerebellum tissue,

IF-P : mouse cerebellum tissue,

**Note-IHC: suggested antigen retrieval with TE buffer pH 9.0; (\*) Alternatively, antigen retrieval may be performed with citrate buffer pH 6.0**

## Background Information

LPHN2, Latrophilin-2, is a calcium-independent receptor of low affinity for alpha-Latrotoxin which triggers massive exocytosis from neurons and neuroendocrine cells. LPHN2 is a novel receptor of LRG1 that rescues vascular and neurological abnormalities (PMID: 35562586). LPHN2 and LPHN3 serve as postsynaptic recognition molecules in CA1 pyramidal neurons of the hippocampus, localized to Purkinje cells in cerebellum (PMID: 32202499).

## Storage

### Storage:

Store at -20°C. Stable for one year after shipment.

### Storage Buffer:

PBS with 0.02% sodium azide and 50% glycerol pH 7.3.

Aliquoting is unnecessary for -20°C storage

For technical support and original validation data for this product please contact:

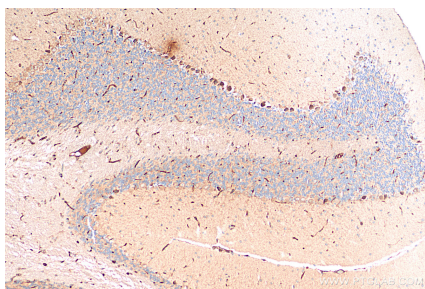
T: 4006900926

E: [Proteintech-CN@ptglab.com](mailto:Proteintech-CN@ptglab.com)

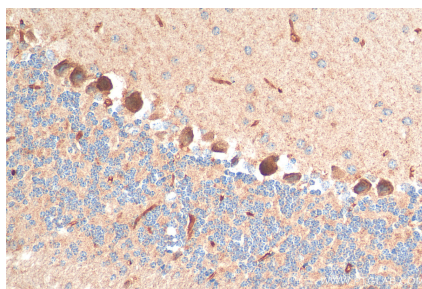
W: [ptgcn.com](http://ptgcn.com)

**This product is exclusively available under Proteintech Group brand and is not available to purchase from any other manufacturer.**

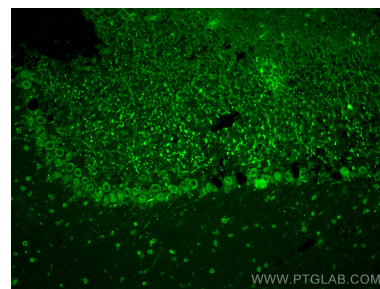
## Selected Validation Data



Immunohistochemical analysis of paraffin-embedded mouse cerebellum tissue slide using 20043-1-AP (LPHN2 antibody) at dilution of 1:200 (under 10x lens). Heat mediated antigen retrieval with Tris-EDTA buffer (pH 9.0).



Immunohistochemical analysis of paraffin-embedded mouse cerebellum tissue slide using 20043-1-AP (LPHN2 antibody) at dilution of 1:200 (under 40x lens). Heat mediated antigen retrieval with Tris-EDTA buffer (pH 9.0).



Immunofluorescent analysis of (4% PFA) fixed mouse cerebellum tissue using LPHN2 antibody (20043-1-AP) at dilution of 1:200 and CoraLite®488-Conjugated AffiniPure Goat Anti-Rabbit IgG(H+L).