

ZC3H4 Polyclonal antibody

Catalog Number: 20041-1-AP

9 Publications

Basic Information

Catalog Number:

20041-1-AP

Size:

400 µg/ml

Source:

Rabbit

Isotype:

IgG

GenBank Accession Number:

NM_015168

GeneID (NCBI):

23211

UNIPROT ID:

Q9UPT8

Full Name:

zinc finger CCCH-type containing 4

Calculated MW:

140 kDa

Observed MW:

130-140 kDa

Purification Method:

Antigen affinity purification

Recommended Dilutions:

WB 1:500-1:1000

IHC 1:20-1:200

IF/ICC 1:10-1:100

Applications

Tested Applications:

IF/ICC, IHC, WB, ELISA

Cited Applications:

WB, IF

Species Specificity:

human, mouse

Cited Species:

human, mouse

Note-IHC: suggested antigen retrieval with TE buffer pH 9.0; (*) Alternatively, antigen retrieval may be performed with citrate buffer pH 6.0

Positive Controls:

WB : mouse brain tissue, human brain tissue

IHC : human cervical cancer tissue,

IF/ICC : Hela cells,

Background Information

ZC3H4, also named as C19orf7 and KIAA1064, is a 140kd protein. The antibody can recognizes near the C-term of ZC3H4.

Notable Publications

Author	Pubmed ID	Journal	Application
Rong Jiang	32218530	Lab Invest	WB
Rong Jiang	30826420	Toxicol Lett	WB
Xiyue Yang	29401612	FASEB J	WB, IF

Storage

Storage:

Store at -20°C. Stable for one year after shipment.

Storage Buffer:

PBS with 0.02% sodium azide and 50% glycerol pH 7.3.

Aliquoting is unnecessary for -20°C storage

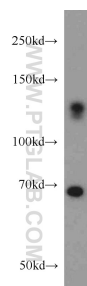
For technical support and original validation data for this product please contact:

T: 4006900926

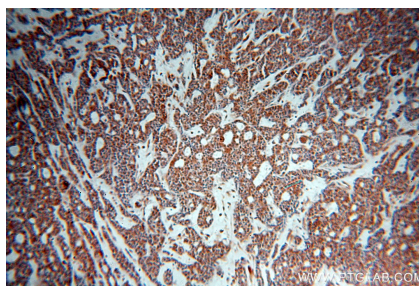
E: Proteintech-CN@ptglab.comW: ptgcn.com

This product is exclusively available under Proteintech Group brand and is not available to purchase from any other manufacturer.

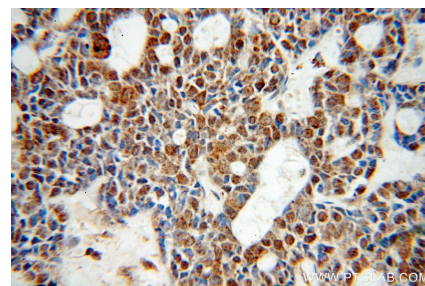
Selected Validation Data



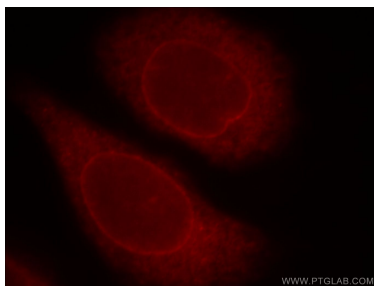
mouse brain tissue were subjected to SDS PAGE followed by western blot with 20041-1-AP (ZC3H4 antibody) at dilution of 1:500 incubated at room temperature for 1.5 hours.



Immunohistochemical analysis of paraffin-embedded human cervical cancer using 20041-1-AP (ZC3H4 antibody) at dilution of 1:50 (under 10x lens).



Immunohistochemical analysis of paraffin-embedded human cervical cancer using 20041-1-AP (ZC3H4 antibody) at dilution of 1:50 (under 40x lens).



Immunofluorescent analysis of HeLa cells, using ZC3H4 antibody 20041-1-AP at 1:25 dilution and Rhodamine-labeled goat anti-rabbit IgG (red).