

For Research Use Only

# CEP350-Specific Polyclonal antibody, PBS Only

Catalog Number:20022-1-PBS



## Basic Information

**Catalog Number:**

20022-1-PBS

**Size:**

1 mg/ml

**Source:**

Rabbit

**Isotype:**

IgG

**GenBank Accession Number:**

NM\_014810

**GeneID (NCBI):**

9857

**UNIPROT ID:**

Q5VT06

**Full Name:**

centrosomal protein 350kDa

**Calculated MW:**

351 kDa

**Observed MW:**

245 kDa

**Purification Method:**

Antigen affinity purification

## Applications

**Tested Applications:**

WB, IHC, IF/ICC, Indirect ELISA

**Species Specificity:**

human, mouse

## Background Information

CEP350, or Centrosomal Protein 350 kDa, also named CAP350, FLJ38282, FLJ44058, GM133, and KIAA0480, is a protein that plays a crucial role in the formation and maintenance of the centrosome, which is essential for cell division. The molecular weight of CEP350 varies depending on the isoforms and post-translational modifications. The molecular weight of CEP350 can range from 200-245 kDa, 143 kDa, to 65 kDa. These variations in molecular weight are likely due to different isoforms of the protein that arise from alternative splicing or other post-translational modifications.

## Storage

**Storage:**

Store at -80°C.

**The product is shipped with ice packs. Upon receipt, store it immediately at -80°C**

**Storage Buffer:**

PBS Only

For technical support and original validation data for this product please contact:

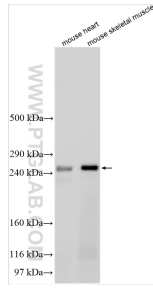
T: 4006900926

E: [Proteintech-CN@ptglab.com](mailto:Proteintech-CN@ptglab.com)

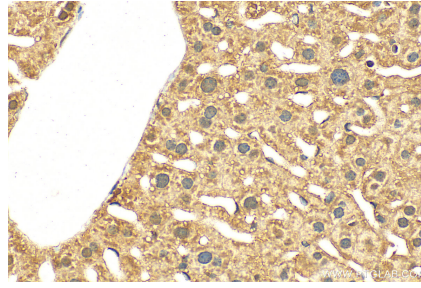
W: [ptgcn.com](http://ptgcn.com)

**This product is exclusively available under Proteintech Group brand and is not available to purchase from any other manufacturer.**

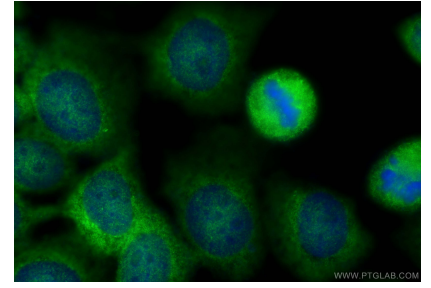
## Selected Validation Data



Various lysates were subjected to SDS PAGE followed by western blot with 20022-1-AP (CEP350-Specific antibody) at dilution of 1:500 incubated at room temperature for 1.5 hours. This data was developed using the same antibody clone with 20022-1-PBS in a different storage buffer formulation.



Immunohistochemical analysis of paraffin-embedded mouse liver tissue slide using 20022-1-AP (CEP350-Specific antibody) at dilution of 1:200 (under 40x lens). Heat mediated antigen retrieval with Tris-EDTA buffer (pH 9.0). This data was developed using the same antibody clone with 20022-1-PBS in a different storage buffer formulation.



Immunofluorescent analysis of (-20°C Methanol) fixed A431 cells using CEP350-Specific antibody (20022-1-AP) at dilution of 1:400 and Multi-rAb CoraLite® Plus 488-Goat Anti-Rabbit Recombinant Secondary Antibody (H+L) (RGAR002). This data was developed using the same antibody clone with 20022-1-PBS in a different storage buffer formulation.