

# CEP350-Specific Polyclonal antibody

Catalog Number:20022-1-AP

## Basic Information

**Catalog Number:**

20022-1-AP

**Size:**

500 ug/ml

**Source:**

Rabbit

**Isotype:**

IgG

**GenBank Accession Number:**

NM\_014810

**GeneID (NCBI):**

9857

**UNIPROT ID:**

Q5VT06

**Full Name:**

centrosomal protein 350kDa

**Calculated MW:**

351 kDa

**Observed MW:**

245 kDa

**Purification Method:**

Antigen affinity purification

**Recommended Dilutions:**

WB 1:500-1:1000

IHC 1:50-1:500

IF/ICC 1:200-1:800

## Applications

**Tested Applications:**

WB, IHC, IF/ICC, ELISA

**Species Specificity:**

human, mouse

**Note-IHC: suggested antigen retrieval with  
TE buffer pH 9.0; (\*) Alternatively, antigen  
retrieval may be performed with citrate  
buffer pH 6.0**

**Positive Controls:**

WB : mouse heart tissue, mouse skeletal muscle tissue

IHC : mouse liver tissue,

IF/ICC : A431 cells,

## Background Information

CEP350, or Centrosomal Protein 350 kDa, also named CAP350, FLJ38282, FLJ44058, GM133, and KIAA0480, is a protein that plays a crucial role in the formation and maintenance of the centrosome, which is essential for cell division. The molecular weight of CEP350 varies depending on the isoforms and post-translational modifications. the molecular weight of CEP350 can range from 200-245 kDa, 143 kDa, to 65 kDa. These variations in molecular weight are likely due to different isoforms of the protein that arise from alternative splicing or other post-translational modifications.

## Storage

**Storage:**

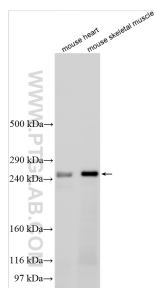
Store at -20°C. Stable for one year after shipment.

**Storage Buffer:**

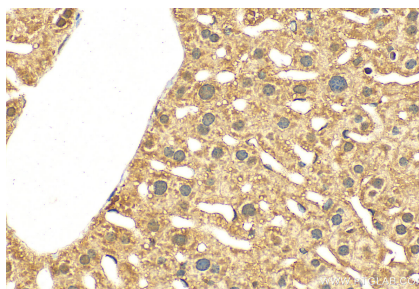
PBS with 0.02% sodium azide and 50% glycerol pH 7.3.

Aliquoting is unnecessary for -20°C storage

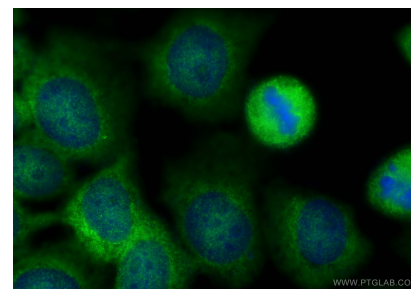
## Selected Validation Data



Various lysates were subjected to SDS PAGE followed by western blot with 20022-1-AP (CEP350-Specific antibody) at dilution of 1:500 incubated at room temperature for 1.5 hours.



Immunohistochemical analysis of paraffin-embedded mouse liver tissue slide using 20022-1-AP (CEP350-Specific antibody) at dilution of 1:200 (under 40x lens). Heat mediated antigen retrieval with Tris-EDTA buffer (pH 9.0).



Immunofluorescent analysis of (-20°C Methanol) fixed A431 cells using CEP350-Specific antibody (20022-1-AP) at dilution of 1:400 and Multi-rAb CoraLite® Plus 488-Goat Anti-Rabbit Recombinant Secondary Antibody (H+L) (RGAR002).