

For Research Use Only

GPRASP1-Specific Polyclonal antibody



Catalog Number: 20020-1-AP

1 Publications

Basic Information

Catalog Number:

20020-1-AP

Size:

260 µg/ml

Source:

Rabbit

Isotype:

IgG

GenBank Accession Number:

NM_014710

GeneID (NCBI):

9737

UNIPROT ID:

Q5JY77

Full Name:

G protein-coupled receptor associated sorting protein 1

Calculated MW:

157 kDa

Observed MW:

157 kDa

Purification Method:

Antigen affinity purification

Recommended Dilutions:

WB 1:500-1:3000

IHC 1:20-1:200

Applications

Tested Applications:

IHC, WB, ELISA

Cited Applications:

WB, IF

Species Specificity:

human, mouse

Cited Species:

mouse

Note-IHC: suggested antigen retrieval with TE buffer pH 9.0; (*) Alternatively, antigen retrieval may be performed with citrate buffer pH 6.0

Positive Controls:

WB : HeLa cells, HepG2 cells, human brain tissue, mouse brain tissue

IHC : human brain tissue,

Background Information

GPRASP1, also named as GASP, GASP1 and KIAA0443, belongs to the GPRASP family. GPRASP1 may modulate lysosomal sorting and functional down-regulation of a variety of G-protein coupled receptors. It targets receptors for degradation in lysosomes. The antibody is specific to GPRASP1.

Notable Publications

Author	Pubmed ID	Journal	Application
Baining Zhang	38284902	Aging (Albany NY)	WB,IF

Storage

Storage:

Store at -20°C. Stable for one year after shipment.

Storage Buffer:

PBS with 0.02% sodium azide and 50% glycerol pH 7.3.

Aliquoting is unnecessary for -20°C storage

For technical support and original validation data for this product please contact:

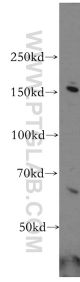
T: 4006900926

E: Proteintech-CN@ptglab.com

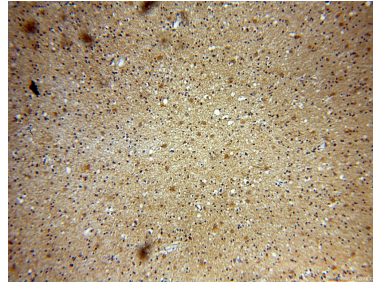
W: ptgcn.com

This product is exclusively available under Proteintech Group brand and is not available to purchase from any other manufacturer.

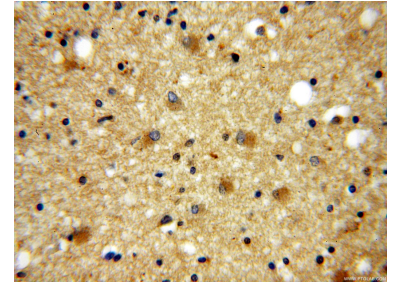
Selected Validation Data



HeLa cells were subjected to SDS PAGE followed by western blot with 20020-1-AP (GPRASP1-Specific antibody) at dilution of 1:500 incubated at room temperature for 1.5 hours.



Immunohistochemical analysis of paraffin-embedded human brain using 20020-1-AP (GPRASP1-Specific antibody) at dilution of 1:100 (under 10x lens).



Immunohistochemical analysis of paraffin-embedded human brain using 20020-1-AP (GPRASP1-Specific antibody) at dilution of 1:100 (under 40x lens).