

CYP4F2-Specific Polyclonal antibody

Catalog Number: 20010-1-AP

Featured Product

Basic Information

Catalog Number:

20010-1-AP

Size:

400 µg/ml

Source:

Rabbit

Isotype:

IgG

GenBank Accession Number:

NM_001082

GeneID (NCBI):

8529

UNIPROT ID:

P78329

Full Name:cytochrome P450, family 4, subfamily
F, polypeptide 2**Calculated MW:**

60 kDa

Observed MW:

50-53 kDa

Purification Method:

Antigen affinity purification

Recommended Dilutions:

WB 1:500-1:3000

IHC 1:50-1:500

Applications

Tested Applications:

IHC, WB, ELISA

Species Specificity:

human

Note-IHC: suggested antigen retrieval with *TE buffer pH 9.0*; (*) Alternatively, antigen retrieval may be performed with *citrate buffer pH 6.0*

Positive Controls:

WB : A549 cells, HuH-7 cells, L02 cells, SMMC-7721 cells

IHC : human liver tissue,

Background Information

CYP4F2, also named as CPF2, belongs to the cytochrome P450 family. Cytochromes P450 are a group of heme-thiolate monooxygenases. In liver microsomes, CYP4F2 is involved in an NADPH-dependent electron transport pathway. It oxidizes a variety of structurally unrelated compounds, including steroids, fatty acids, and xenobiotics. This antibody is specific to CYP4F2 with an observed molecular weight of 50-53 kDa (PMID: 17341693, PMID: 37121548). It has no cross reaction to other CYP4F member.

Storage

Storage:

Store at -20°C. Stable for one year after shipment.

Storage Buffer:

PBS with 0.02% sodium azide and 50% glycerol pH 7.3.

Aliquoting is unnecessary for -20°C storage

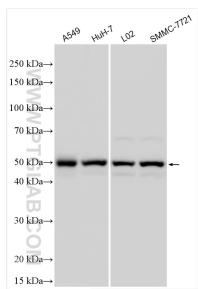
For technical support and original validation data for this product please contact:

T: 4006900926

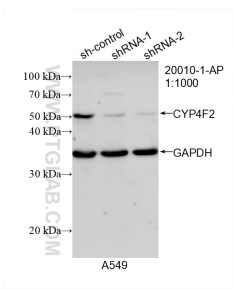
E: Proteintech-CN@ptglab.comW: ptgcn.com

This product is exclusively available under Proteintech Group brand and is not available to purchase from any other manufacturer.

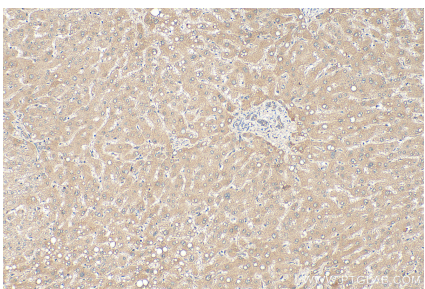
Selected Validation Data



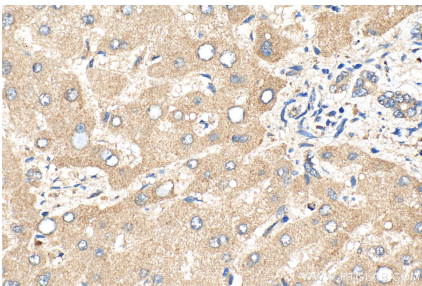
Various lysates were subjected to SDS PAGE followed by western blot with 20010-1-AP (CYP4F2-Specific antibody) at dilution of 1:1500 incubated at room temperature for 1.5 hours.



WB result of CYP4F2-Specific antibody (20010-1-AP; 1:1000; incubated at room temperature for 1.5 hours) with sh-Control and sh-CYP4F2-Specific transfected A549 cells.



Immunohistochemical analysis of paraffin-embedded human liver tissue slide using 20010-1-AP (CYP4F2-Specific antibody) at dilution of 1:200 (under 10x lens). Heat mediated antigen retrieval with Tris-EDTA buffer (pH 9.0).



Immunohistochemical analysis of paraffin-embedded human liver tissue slide using 20010-1-AP (CYP4F2-Specific antibody) at dilution of 1:200 (under 40x lens). Heat mediated antigen retrieval with Tris-EDTA buffer (pH 9.0).