

For Research Use Only

LDHA-Specific Polyclonal antibody

Catalog Number:19987-1-AP

Featured Product

263 Publications



Basic Information

Catalog Number:

19987-1-AP

Concentration:

650 ug/ml

Source:

Rabbit

Isotype:

IgG

GenBank Accession Number:

NM_005566

GeneID (NCBI):

3939

UNIPROT ID:

P00338

Full Name:

lactate dehydrogenase A

Calculated MW:

37 kDa

Observed MW:

32-37 kDa

Purification Method:

Antigen affinity purification

Recommended Dilutions:

WB 1:2000-1:10000

IP 0.5-4.0 ug for 1.0-3.0 mg of total protein lysate

IHC 1:20-1:200

IF/ICC 1:50-1:500

Applications

Tested Applications:

WB, IHC, IF/ICC, IP, ELISA

Cited Applications:

WB, IHC, IF, IP, CoIP, RIP

Species Specificity:

human, mouse, rat

Cited Species:

human, mouse, rat, rabbit, chicken, goat

Note-IHC: suggested antigen retrieval with TE buffer pH 9.0; (*) Alternatively, antigen retrieval may be performed with citrate buffer pH 6.0

Positive Controls:

WB : HEK-293 cells, A431 cells, HeLa cells, MDA-MB-231 cells, mouse testis tissue, rat kidney tissue, Jurkat cells, NIH/3T3 cells, MCF-7 cells

IP : mouse kidney tissue,

IHC : human heart tissue, human skeletal muscle tissue, human testis tissue

IF/ICC : HepG2 cells,

Background Information

Lactate dehydrogenase (LDH) is composed of A subunits predominate in skeletal muscle and B subunits are abundantly produced in brain and heart. The LDHA (lactate dehydrogenase A) and COPB1 (coatomer protein complex, subunit beta 1) genes, are involved in energy metabolism and protein transport processes. Both genes might play important roles in muscle development. It has some isoforms with the molecular mass of 27-40 kDa and can form a homotetramer(PMID:11276087). This antibody is specific to LDHA and has no cross reaction to LDHB and LDHC.

Notable Publications

| Author | Pubmed ID | Journal | Application |
|----------------|-----------|----------------|-------------|
| Teresa W-M Fan | 36150727 | J Immunol | |
| Yuyu Chen | 36127325 | Cell Death Dis | WB |
| Di Huang | 30224822 | Nat Immunol | |

Storage

Storage:

Store at -20°C. Stable for one year after shipment.

Storage Buffer:

PBS with 0.02% sodium azide and 50% glycerol, pH7.3

Aliquoting is unnecessary for -20°C storage

For technical support and original validation data for this product please contact:

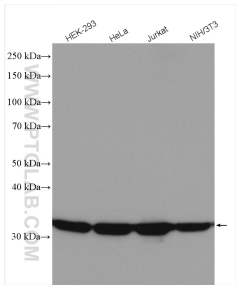
T: 4006900926

E: Proteintech-CN@ptglab.com

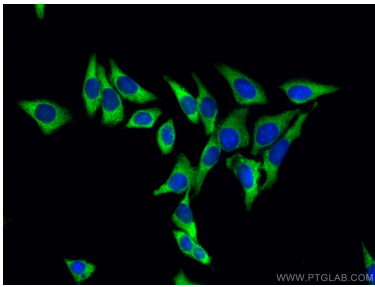
W: ptgcn.com

This product is exclusively available under Proteintech Group brand and is not available to purchase from any other manufacturer.

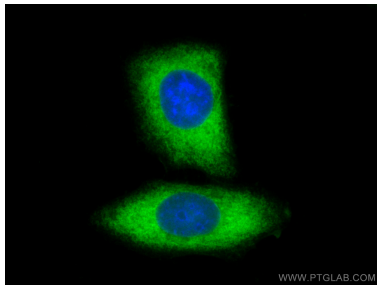
Selected Validation Data



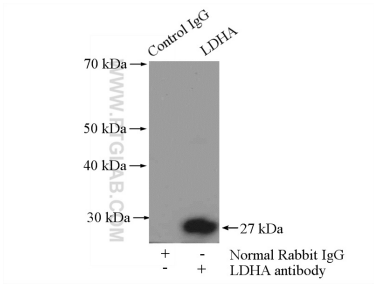
Various lysates were subjected to SDS PAGE followed by western blot with 19987-1-AP (LDHA-Specific antibody) at dilution of 1:5000 incubated at room temperature for 1.5 hours.



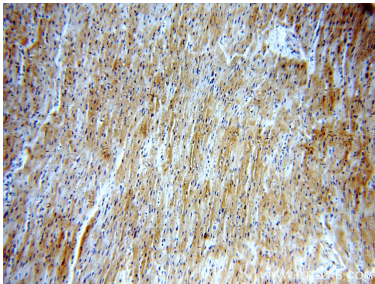
Immunofluorescent analysis of (-20°C Methanol) fixed HepG2 cells using LDHA-Specific antibody (19987-1-AP) at dilution of 1:200 and CoraLite®488-Conjugated AffiniPure Goat Anti-Rabbit IgG(H+L).



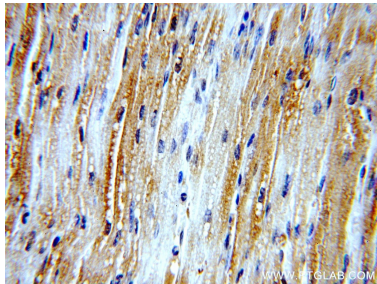
Immunofluorescent analysis of (-20°C Methanol) fixed HepG2 cells using LDHA-Specific antibody (19987-1-AP) at dilution of 1:200 and CoraLite®488-Conjugated AffiniPure Goat Anti-Rabbit IgG(H+L).



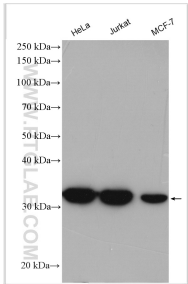
IP result of anti-LDHA-Specific (IP:19987-1-AP, 4ug; Detection:19987-1-AP 1:2000) with mouse kidney tissue lysate 4000ug.



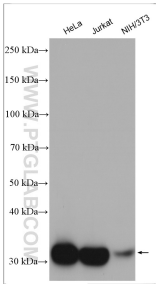
Immunohistochemical analysis of paraffin-embedded human heart using 19987-1-AP (LDHA-Specific antibody) at dilution of 1:100 (under 10x lens).



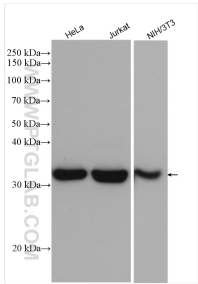
Immunohistochemical analysis of paraffin-embedded human heart using 19987-1-AP (LDHA-Specific antibody) at dilution of 1:100 (under 40x lens).



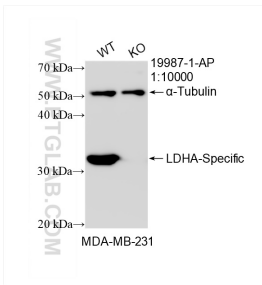
Various lysates were subjected to SDS PAGE followed by western blot with 19987-1-AP (LDHA-Specific antibody) at dilution of 1:10000 incubated at room temperature for 1.5 hours.



Various lysates were subjected to SDS PAGE followed by western blot with 19987-1-AP (LDHA-Specific antibody) at dilution of 1:8000 incubated at room temperature for 1.5 hours.



HeLa cells were subjected to SDS PAGE followed by western blot with 19987-1-AP (LDHA-Specific antibody) at dilution of 1:8000 incubated at room temperature for 1.5 hours.



Western blot analysis of LDHA in MDA-MB-231 cells. The molecular weight markers on the left range from 70 kDa to 20 kDa. A single band is visible at approximately 30 kDa, indicated by an arrow on the right. The lanes are labeled WT and KO. Below the lanes, a table indicates the presence (+) or absence (-) of 19987-1-AP and α-Tubulin.

WB result of LDHA-Specific antibody (19987-1-AP;
1:10000; room temperature for 1.5 hours) with wild-
type and LDHA knockout MDA-MB-231 cells.