

For Research Use Only

# PRKCQ-Specific Polyclonal antibody, PBS Only

Catalog Number: 19982-1-PBS



## Basic Information

**Catalog Number:**

19982-1-PBS

**Size:**

1 mg/ml

**Source:**

Rabbit

**Isotype:**

IgG

**GenBank Accession Number:**

NM\_006257

**GeneID (NCBI):**

5588

**UNIPROT ID:**

Q04759

**Full Name:**

protein kinase C, theta

**Calculated MW:**

82 kDa

**Observed MW:**

72-74 kDa

**Purification Method:**

Antigen affinity purification

## Applications

**Tested Applications:**

WB, FC (Intra), IP, Indirect ELISA

**Species Specificity:**

human

## Background Information

PRKCQ, also named as PRKCT and nPKC-theta, belongs to the protein kinase superfamily, AGC Ser/Thr protein kinase family and PKC subfamily. PRKCQ catalyzes the reaction: ATP + a protein = ADP + a phosphoprotein. PRKCQ is a calcium-independent, phospholipid-dependent, serine- and threonine-specific enzyme. It is essential for T-cell receptor (TCR)-mediated T-cell activation, but it is dispensable during TCR-dependent thymocyte development. PRKCQ links the TCR signaling complex to the activation of NF-kappa-B in mature T lymphocytes. It is required for interleukin-2 (IL2) production. PKC is activated by diacylglycerol which in turn phosphorylates a range of cellular proteins. PKC also serves as the receptor for phorbol esters, a class of tumor promoters. This antibody is specific to PRKCQ.

## Storage

**Storage:**

Store at -80°C.

**The product is shipped with ice packs. Upon receipt, store it immediately at -80°C**

**Storage Buffer:**

PBS Only

For technical support and original validation data for this product please contact:

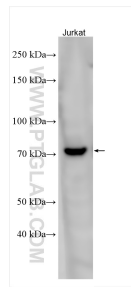
T: 4006900926

E: [Proteintech-CN@ptglab.com](mailto:Proteintech-CN@ptglab.com)

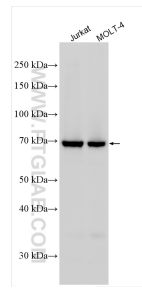
W: [ptgcn.com](http://ptgcn.com)

**This product is exclusively available under Proteintech Group brand and is not available to purchase from any other manufacturer.**

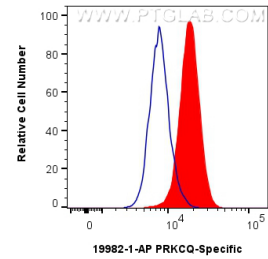
## Selected Validation Data



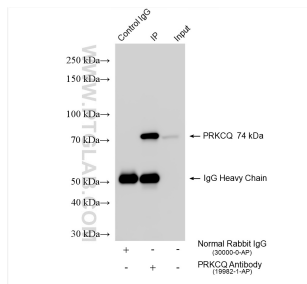
Various lysates were subjected to SDS PAGE followed by western blot with 19982-1-AP (PRKCQ-Specific antibody) at dilution of 1:500 incubated at room temperature for 1.5 hours. This data was developed using the same antibody clone with 19982-1-PBS in a different storage buffer formulation.



Various lysates were subjected to SDS PAGE followed by western blot with 19982-1-AP (PRKCQ-Specific antibody) at dilution of 1:500 incubated at room temperature for 1.5 hours. This data was developed using the same antibody clone with 19982-1-PBS in a different storage buffer formulation.



$1 \times 10^6$  K-562 cells were intracellularly stained with 0.2 ug PRKCQ-Specific Polyclonal antibody (19982-1-AP) and CoraLite@488-Conjugated Goat Anti-Rabbit IgG(H+L) (SA00013-2)(red), or 0.2 ug Rabbit IgG control Rabbit PolyAb (30000-0-AP) (blue). Cells were fixed with 4% PFA and permeabilized with Flow Cytometry Perm Buffer (PF00011-C). This data was developed using the same antibody clone with 19982-1-PBS in a different storage buffer formulation.



IP result of anti-PRKCQ-Specific (IP:19982-1-AP, 4ug; Detection:19982-1-AP 1:500) with K-562 cells lysate 1600 ug. This data was developed using the same antibody clone with 19982-1-PBS in a different storage buffer formulation.