

For Research Use Only

MLK2 Polyclonal antibody, PBS Only

Catalog Number:19974-1-PBS



Basic Information

Catalog Number:

19974-1-PBS

Concentration:

1 mg/ml

Source:

Rabbit

Isotype:

IgG

GenBank Accession Number:

NM_002446

GeneID (NCBI):

4294

UNIPROT ID:

Q02779

Full Name:

mitogen-activated protein kinase

kinase kinase 10

Calculated MW:

104 kDa

Observed MW:

104-115 kDa

Purification Method:

Antigen affinity purification

Applications

Tested Applications:

WB, IHC, Indirect ELISA

Species Specificity:

human, mouse

Background Information

MAP3K10, also named as MLK2 and MST, belongs to the protein kinase superfamily, STE Ser/Thr protein kinase family and MAP kinase kinase kinase subfamily. MAP3K10 activates the JUN N-terminal pathway. MAP3K10 catalyzes the reaction: ATP + a protein = ADP + a phosphoprotein. The antibody recognizes the N-term of MAP3K10. The antibody has no cross reaction to MAP3K9.

Storage

Storage:

Store at -80°C.

The product is shipped with ice packs. Upon receipt, store it immediately at -80°C

Storage Buffer:

PBS only, pH7.3

For technical support and original validation data for this product please contact:

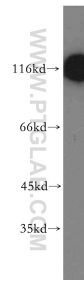
T: 4006900926

E: Proteintech-CN@ptglab.com

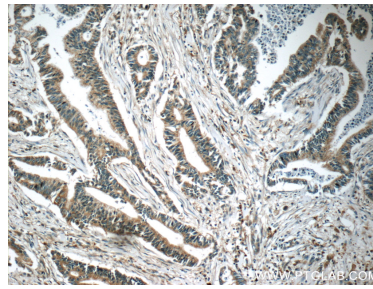
W: ptgcn.com

This product is exclusively available under Proteintech Group brand and is not available to purchase from any other manufacturer.

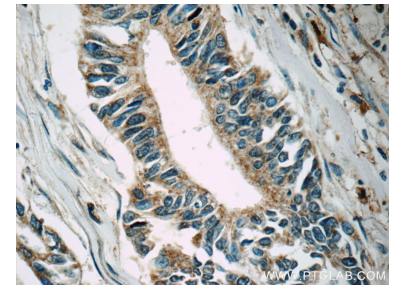
Selected Validation Data



human skeletal muscle tissue were subjected to SDS PAGE followed by western blot with 19974-1-AP (MLK2 antibody) at dilution of 1:300 incubated at room temperature for 1.5 hours. This data was developed using the same antibody clone with 19974-1-PBS in a different storage buffer formulation.



Immunohistochemical analysis of paraffin-embedded human pancreas cancer tissue slide using 19974-1-AP (MLK2 antibody at dilution of 1:50 (under 10x lens). This data was developed using the same antibody clone with 19974-1-PBS in a different storage buffer formulation.



Immunohistochemical analysis of paraffin-embedded human pancreas cancer tissue slide using 19974-1-AP (MLK2 antibody at dilution of 1:50 (under 40x lens). This data was developed using the same antibody clone with 19974-1-PBS in a different storage buffer formulation.