

For Research Use Only

MLK2 Polyclonal antibody

Catalog Number: 19974-1-AP **2 Publications**



Basic Information

Catalog Number:

19974-1-AP

Size:

133 µg/ml

Source:

Rabbit

Isotype:

IgG

GenBank Accession Number:

NM_002446

GeneID (NCBI):

4294

UNIPROT ID:

Q02779

Full Name:

mitogen-activated protein kinase
kinase kinase 10

Calculated MW:

104 kDa

Observed MW:

104-115 kDa

Purification Method:

Antigen affinity purification

Recommended Dilutions:

WB 1:500-1:2000

IHC 1:20-1:200

Applications

Tested Applications:

IHC, WB, ELISA

Cited Applications:

WB

Species Specificity:

human

Cited Species:

human

Note-IHC: suggested antigen retrieval with TE buffer pH 9.0; (*) Alternatively, antigen retrieval may be performed with citrate buffer pH 6.0

Positive Controls:

WB : human skeletal muscle tissue, human brain tissue

IHC : human pancreas cancer tissue,

Background Information

MAP3K10, also named as MLK2 and MST, belongs to the protein kinase superfamily, STE Ser/Thr protein kinase family and MAP kinase kinase kinase subfamily. MAP3K10 activates the JUN N-terminal pathway. MAP3K10 catalyzes the reaction: ATP + a protein = ADP + a phosphoprotein. The antibody recognizes the N-term of MAP3K10. The antibody has no cross reaction to MAP3K9.

Notable Publications

Author	Pubmed ID	Journal	Application
Luis Cedeno-Rosario	35843311	J Biol Chem	WB
Chia-Hao Huang	27377153	Lab Chip	WB

Storage

Storage:

Store at -20°C. Stable for one year after shipment.

Storage Buffer:

PBS with 0.02% sodium azide and 50% glycerol pH 7.3.

Aliquoting is unnecessary for -20°C storage

For technical support and original validation data for this product please contact:

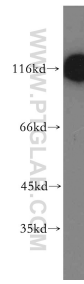
T: 4006900926

E: Proteintech-CN@ptglab.com

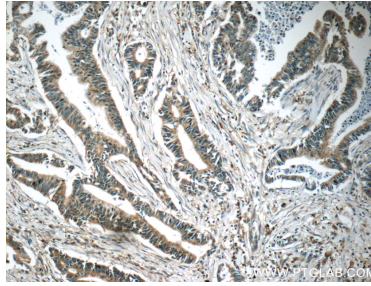
W: ptgcn.com

This product is exclusively available under Proteintech Group brand and is not available to purchase from any other manufacturer.

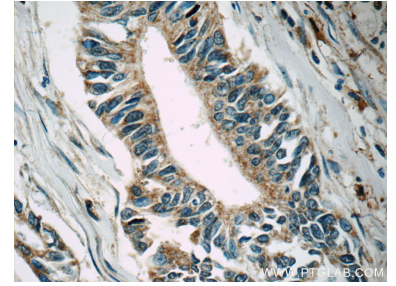
Selected Validation Data



human skeletal muscle tissue were subjected to SDS PAGE followed by western blot with 19974-1-AP (MLK2 antibody) at dilution of 1:300 incubated at room temperature for 1.5 hours.



Immunohistochemical analysis of paraffin-embedded human pancreas cancer tissue slide using 19974-1-AP (MLK2 antibody at dilution of 1:50 (under 10x lens).



Immunohistochemical analysis of paraffin-embedded human pancreas cancer tissue slide using 19974-1-AP (MLK2 antibody at dilution of 1:50 (under 40x lens).