

For Research Use Only

MAP3K1 Polyclonal antibody

Catalog Number: 19970-1-AP

Featured Product

12 Publications



Basic Information

Catalog Number:

19970-1-AP

Size:

300 µg/ml

Source:

Rabbit

Isotype:

IgG

GenBank Accession Number:

NM_005921

GeneID (NCBI):

4214

UNIPROT ID:

Q13233

Full Name:

mitogen-activated protein kinase
kinase kinase 1

Calculated MW:

164 kDa

Observed MW:

164 kDa

Purification Method:

Antigen affinity purification

Recommended Dilutions:

WB 1:1000-1:4000

IP 0.5-4.0 µg for 1.0-3.0 mg of total
protein lysate

IHC 1:50-1:500

IF/ICC 1:20-1:200

Applications

Tested Applications:

WB, IHC, IF/ICC, IP, ELISA

Cited Applications:

WB, IF

Species Specificity:

human, mouse, rat

Cited Species:

human, mouse

Positive Controls:

WB : mouse embryo tissue, A431 cells, mouse spleen
tissue, A549 cells, NIH/3T3 cells, rat spleen tissue

IP : NIH/3T3 cells,

IHC : human spleen tissue,

IF/ICC : HeLa cells,

**Note-IHC: suggested antigen retrieval with
TE buffer pH 9.0; (*) Alternatively, antigen
retrieval may be performed with citrate
buffer pH 6.0**

Background Information

MAP3K1, also named as MAPKKK1, MEKK and MEKK1, belongs to the protein kinase superfamily, STE Ser/Thr protein kinase family and MAP kinase kinase kinase subfamily. MAP3K1 is a component of a protein kinase signal transduction cascade. MAP3K1 activates the ERK and JNK kinase pathways by phosphorylation of MAP2K1 and MAP2K4. It activates CHUK and IKBKB, the central protein kinases of the NF-kappa-B pathway. It catalyzes the reaction: ATP + a protein = ADP + a phosphoprotein. The antibody recognizes the N-term of MAP3K1.

Notable Publications

Author	Pubmed ID	Journal	Application
Jingsheng Yuan	36244648	Cell Mol Gastroenterol Hepatol	WB
Zepeng Xu	34655847	Int Immunopharmacol	WB
Rui Tang	31853225	Int J Biol Sci	WB

Storage

Storage:

Store at -20°C. Stable for one year after shipment.

Storage Buffer:

PBS with 0.02% sodium azide and 50% glycerol pH 7.3.

Aliquoting is unnecessary for -20°C storage

For technical support and original validation data for this product please contact:

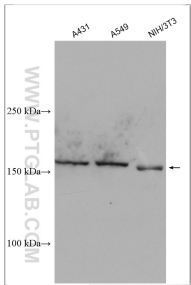
T: 4006900926

E: Proteintech-CN@ptglab.com

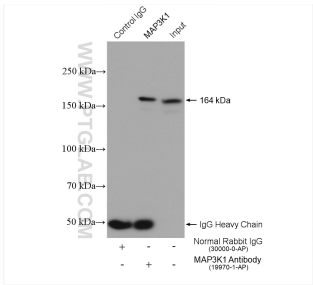
W: ptgcn.com

This product is exclusively available under Proteintech Group brand and is not available to purchase from any other manufacturer.

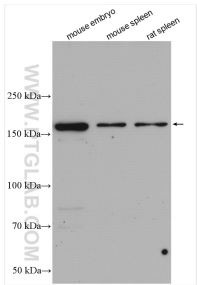
Selected Validation Data



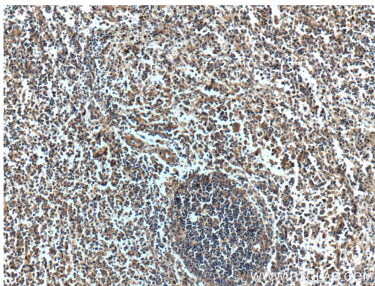
Various lysates were subjected to SDS PAGE followed by western blot with 19970-1-AP (MAP3K1 antibody) at dilution of 1:500 incubated at room temperature for 1.5 hours.



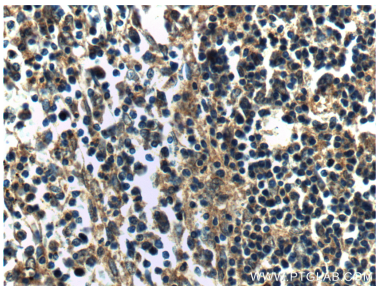
IP result of anti-MAP3K1 (IP:19970-1-AP, 4ug; Detection:19970-1-AP 1:1000) with NIH/3T3 cells lysate 1120 ug.



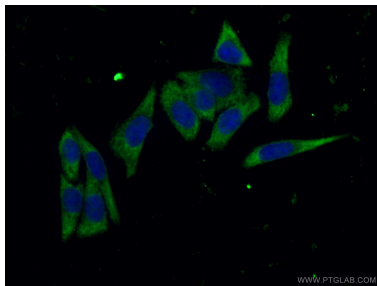
Various lysates were subjected to SDS PAGE followed by western blot with 19970-1-AP (MAP3K1 antibody) at dilution of 1:2000 incubated at room temperature for 1.5 hours.



Immunohistochemical analysis of paraffin-embedded human spleen tissue slide using 19970-1-AP (MAP3K1 Antibody) at dilution of 1:200 (under 10x lens).



Immunohistochemical analysis of paraffin-embedded human spleen tissue slide using 19970-1-AP (MAP3K1 Antibody) at dilution of 1:200 (under 40x lens).



Immunofluorescent analysis of (-20°C Ethanol) fixed HeLa cells using 19970-1-AP (MAP3K1 antibody) at dilution of 1:50 and Alexa Fluor 488-conjugated Goat Anti-Rabbit IgG(H+L).