

For Research Use Only

# ITPR1-specific Polyclonal antibody

Catalog Number: 19962-1-AP

28 Publications



## Basic Information

### Catalog Number:

19962-1-AP

### Size:

600 µg/ml

### Source:

Rabbit

### Isotype:

IgG

### GenBank Accession Number:

NM\_001099952

### GeneID (NCBI):

3708

### UNIPROT ID:

Q14643

### Full Name:

inositol 1,4,5-trisphosphate receptor, type 1

### Calculated MW:

314 kDa

### Observed MW:

290-300 kDa

### Purification Method:

Antigen affinity purification

### Recommended Dilutions:

WB 1:200-1:1000

IP 0.5-4.0 µg for 1.0-3.0 mg of total protein lysate

IHC 1:50-1:500

## Applications

### Tested Applications:

WB, IP, IHC, ELISA, FC (Intra)

### Cited Applications:

WB, IHC, IP

### Species Specificity:

human, mouse, rat

### Cited Species:

human, mouse, rat, chicken, sheep, duck

**Note-IHC: suggested antigen retrieval with TE buffer pH 9.0; (\*) Alternatively, antigen retrieval may be performed with citrate buffer pH 6.0**

### Positive Controls:

WB : mouse brain tissue, mouse liver tissue

IP : mouse brain tissue,

IHC : human brain tissue, human testis tissue, mouse brain tissue

## Background Information

ITPR1, also named as INSP3R1 and IP3R, belongs to the InsP3 receptor family. It is a receptor for inositol 1,4,5-trisphosphate which is a second messenger that mediates the release of intracellular calcium. Defects in ITPR1 are the cause of spinocerebellar ataxia type 15 (SCA15). The antibody has no cross reaction with ITPR2 and ITPR3.

## Notable Publications

| Author        | Pubmed ID | Journal                | Application |
|---------------|-----------|------------------------|-------------|
| Yuxiang Wang  | 35881904  | J Cardiovasc Pharmacol | WB,IP       |
| Xiaolong Wang | 29800586  | Toxicology             | WB          |
| Ming Yang     | 31060900  | EBioMedicine           | WB          |

## Storage

### Storage:

Store at -20°C. Stable for one year after shipment.

### Storage Buffer:

PBS with 0.02% sodium azide and 50% glycerol pH 7.3.

Aliquoting is unnecessary for -20°C storage

For technical support and original validation data for this product please contact:

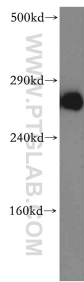
T: 4006900926

E: [Proteintech-CN@ptglab.com](mailto:Proteintech-CN@ptglab.com)

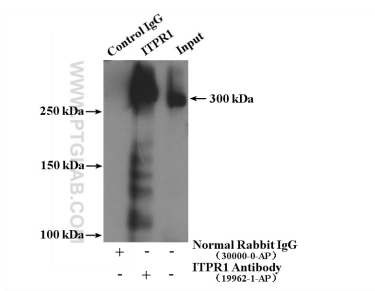
W: [ptgcn.com](http://ptgcn.com)

**This product is exclusively available under Proteintech Group brand and is not available to purchase from any other manufacturer.**

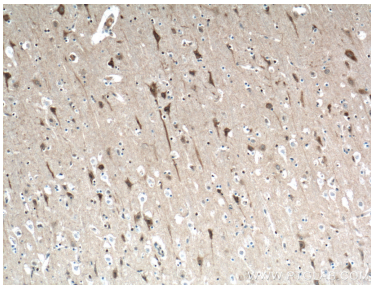
Selected Validation Data



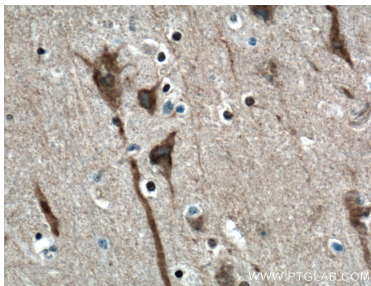
mouse brain tissue were subjected to SDS PAGE followed by western blot with 19962-1-AP (ITPR1-specific antibody) at dilution of 1:300 incubated at room temperature for 1.5 hours.



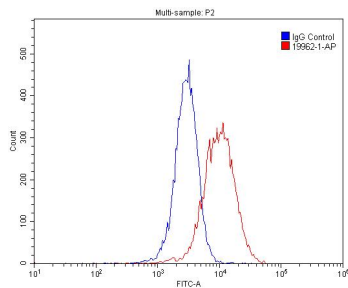
IP result of anti-ITPR1-specific (IP:19962-1-AP, 4ug; Detection:19962-1-AP 1:300) with mouse brain tissue lysate 3160 ug.



Immunohistochemical analysis of paraffin-embedded mouse brain tissue slide using 19962-1-AP (ITPR1-specific antibody) at dilution of 1:200 (under 10x lens. Heat mediated antigen retrieval with Tris-EDTA buffer (pH 9.0).



Immunohistochemical analysis of paraffin-embedded human brain tissue slide using 19962-1-AP (ITPR1-specific antibody) at dilution of 1:200 (under 40x lens. Heat mediated antigen retrieval with Tris-EDTA buffer (pH 9.0).



1X10<sup>6</sup> HepG2 cells were stained with 0.2 ug ITPR1-specific antibody (19962-1-AP, red) and control antibody (blue). Cells were fixed with 4% PFA and permeabilized with 0.1% Triton X-100. Alexa Fluor 488-conjugated Goat Anti-Rabbit IgG(H+L) with dilution 1:1500.