

For Research Use Only

mGluR2 Polyclonal antibody, PBS Only

Catalog Number: 19956-1-PBS



Basic Information

Catalog Number:

19956-1-PBS

Concentration:

1 mg/ml

Source:

Rabbit

Isotype:

IgG

GenBank Accession Number:

NM_000839

GeneID (NCBI):

2912

UNIPROT ID:

Q14416

Full Name:

glutamate receptor, metabotropic 2

Calculated MW:

96 kDa

Observed MW:

96 kDa, 120 kDa

Purification Method:

Antigen affinity purification

Applications

Tested Applications:

WB, IHC, ELISA

Species Specificity:

human, mouse, rat

Background Information

GRM2, also named GPRC1B and MGLUR2, belongs to the G-protein coupled receptor 3 families. GRM2 is a receptor for glutamate. The activity of GRM2 is mediated by a G-protein that inhibits adenylate cyclase activity. It may mediate the suppression of neurotransmission or may be involved in synaptogenesis or synaptic stabilization.

Storage

Storage:

Store at -80°C.

The product is shipped with ice packs. Upon receipt, store it immediately at -80°C

Storage Buffer:

PBS only, pH7.3

For technical support and original validation data for this product please contact:

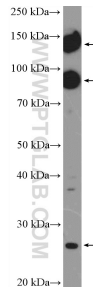
T: 4006900926

E: Proteintech-CN@ptglab.com

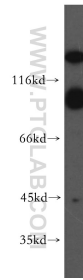
W: ptgcn.com

This product is exclusively available under Proteintech Group brand and is not available to purchase from any other manufacturer.

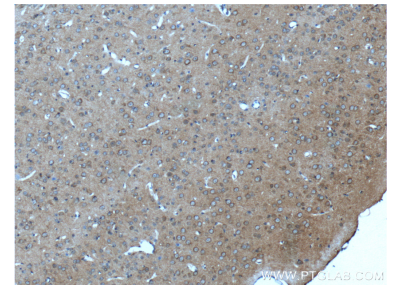
Selected Validation Data



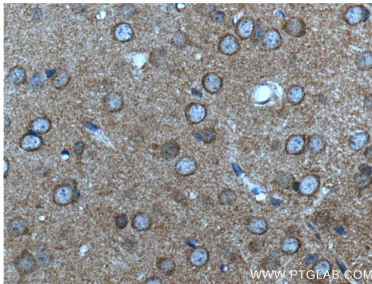
rat brain tissue were subjected to SDS PAGE followed by western blot with 19956-1-AP (mGluR2 antibody at dilution of 1:600 incubated at room temperature for 1.5 hours. This data was developed using the same antibody clone with 19956-1-PBS in a different storage buffer formulation.



human brain tissue were subjected to SDS PAGE followed by western blot with 19956-1-AP (mGluR2 antibody) at dilution of 1:300 incubated at room temperature for 1.5 hours. This data was developed using the same antibody clone with 19956-1-PBS in a different storage buffer formulation.



Immunohistochemical analysis of paraffin-embedded mouse brain tissue slide using 19956-1-AP (mGluR2 antibody at dilution of 1:200 (under 10x lens). This data was developed using the same antibody clone with 19956-1-PBS in a different storage buffer formulation.



Immunohistochemical analysis of paraffin-embedded mouse brain tissue slide using 19956-1-AP (mGluR2 antibody at dilution of 1:200 (under 40x lens). This data was developed using the same antibody clone with 19956-1-PBS in a different storage buffer formulation.