

For Research Use Only

mGluR2 Polyclonal antibody

Catalog Number: 19956-1-AP

3 Publications



Basic Information

Catalog Number:

19956-1-AP

Concentration:

800 µg/ml

Source:

Rabbit

Isotype:

IgG

GenBank Accession Number:

NM_000839

GeneID (NCBI):

2912

UNIPROT ID:

Q14416

Full Name:

glutamate receptor, metabotropic 2

Calculated MW:

96 kDa

Observed MW:

96 kDa, 120 kDa

Purification Method:

Antigen affinity purification

Recommended Dilutions:

WB 1:500-1:2000

IHC 1:50-1:500

Applications

Tested Applications:

WB, IHC, ELISA

Cited Applications:

WB, IHC

Species Specificity:

human, mouse, rat

Cited Species:

human, rat

Note-IHC: suggested antigen retrieval with TE buffer pH 9.0; (*) Alternatively, antigen retrieval may be performed with citrate buffer pH 6.0

Positive Controls:

WB : human brain tissue, HeLa cells, rat brain tissue

IHC : mouse brain tissue,

Background Information

GRM2, also named as GPRC1B and MGLUR2, belongs to the G-protein coupled receptor 3 family. GRM2 is a receptor for glutamate. The activity of GRM2 is mediated by a G-protein that inhibits adenylate cyclase activity. It may mediate suppression of neurotransmission or may be involved in synaptogenesis or synaptic stabilization.

Notable Publications

Author	Pubmed ID	Journal	Application
Xixi Wei	36463578	Auton Neurosci	WB,IHC
Javierre Biola M BM	21737484	Mol Cancer Res	WB
Wen-Tao Wang	39181245	Neurochem Int	WB,IHC

Storage

Storage:

Store at -20°C. Stable for one year after shipment.

Storage Buffer:

PBS with 0.02% sodium azide and 50% glycerol, pH7.3

Aliquoting is unnecessary for -20°C storage

For technical support and original validation data for this product please contact:

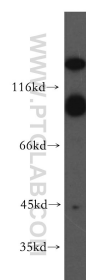
T: 4006900926

E: Proteintech-CN@ptglab.com

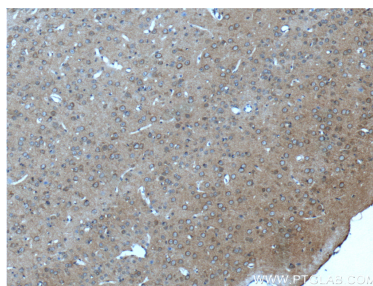
W: ptgcn.com

This product is exclusively available under Proteintech Group brand and is not available to purchase from any other manufacturer.

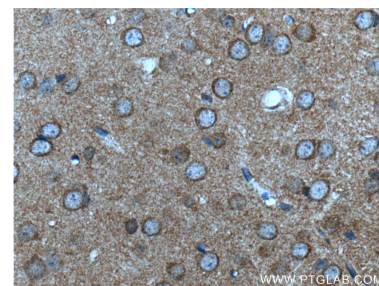
Selected Validation Data



human brain tissue were subjected to SDS PAGE followed by western blot with 19956-1-AP (mGluR2 antibody) at dilution of 1:300 incubated at room temperature for 1.5 hours.



Immunohistochemical analysis of paraffin-embedded mouse brain tissue slide using 19956-1-AP (mGluR2 antibody at dilution of 1:200 (under 10x lens).



Immunohistochemical analysis of paraffin-embedded mouse brain tissue slide using 19956-1-AP (mGluR2 antibody at dilution of 1:200 (under 40x lens).