

For Research Use Only

# GNRHR Polyclonal antibody, PBS Only

Catalog Number:19950-1-PBS



## Basic Information

Catalog Number:

19950-1-PBS

Concentration:

1 mg/ml

Source:

Rabbit

Isotype:

IgG

GenBank Accession Number:

NM\_000406

GeneID (NCBI):

2798

UNIPROT ID:

P30968

Full Name:

GnRH receptor

Calculated MW:

38 kDa

Observed MW:

60-70 kDa

Purification Method:

Antigen affinity purification

## Applications

Tested Applications:

WB, IHC, FC (Intra), Indirect ELISA

Species Specificity:

human, mouse

## Background Information

GNRHR, also named GRHR, belongs to the G-protein coupled receptor 1 family. GNRHR is a receptor for GnRH that mediates the action of GnRH to stimulate the secretion of the gonadotropic hormones luteinizing hormone (LH) and follicle-stimulating hormone (FSH). It mediates its action by association with G-proteins that activate a phosphatidylinositol-calcium second messenger system. Isoform2 of GNRHR may act as an inhibitor of GnRH-R signaling. Defects in GNRHR are a cause of idiopathic hypogonadotropic hypogonadism (IHH). Defects in GNRHR are a cause of fertile eunuch syndrome. The antibody only recognizes the isoform1 of GNRHR. The predicted unmodified molecular weight of the human GNRHR is ~38 kDa, the larger band (50-65 kDa) is likely to represent a glycosylated form of GNRHR.

## Storage

Storage:

Store at -80°C.

**The product is shipped with ice packs. Upon receipt, store it immediately at -80°C**

Storage Buffer:

PBS Only

For technical support and original validation data for this product please contact:

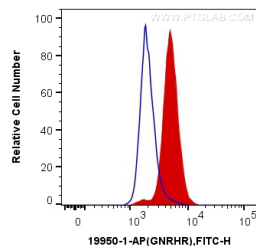
T: 4006900926

E: [Proteintech-CN@ptglab.com](mailto:Proteintech-CN@ptglab.com)

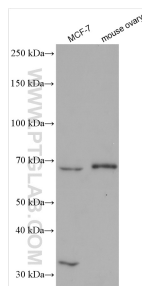
W: [ptgcn.com](http://ptgcn.com)

**This product is exclusively available under Proteintech Group brand and is not available to purchase from any other manufacturer.**

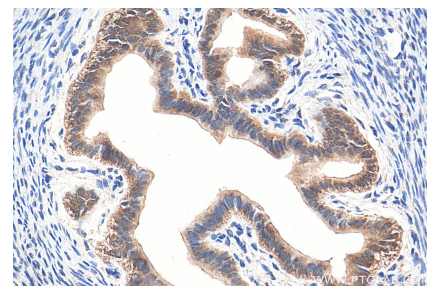
## Selected Validation Data



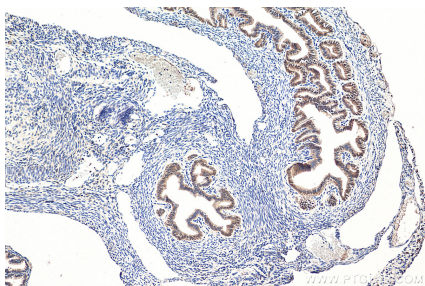
1X10<sup>6</sup> MCF-7 cells were intracellularly stained with 0.2 ug Anti-Human GNRHR (19950-1-AP) (red) or 0.2 ug Control Antibody (blue), and CoraLite®488-Conjugated AffiniPure Goat Anti-Rabbit IgG(H+L) at dilution 1:1000. Cells were fixed with 4% PFA and permeabilized with Flow Cytometry Perm Buffer (PF00011-C). This data was developed using the same antibody clone with 19950-1-PBS in a different storage buffer formulation.



Various lysates were subjected to SDS PAGE followed by western blot with 19950-1-AP (GNRHR antibody) at dilution of 1:3000 incubated at room temperature for 1.5 hours. This data was developed using the same antibody clone with 19950-1-PBS in a different storage buffer formulation.



Immunohistochemical analysis of paraffin-embedded mouse ovary tissue slide using 19950-1-AP (GNRHR antibody) at dilution of 1:1000 (under 40x lens). Heat mediated antigen retrieval with Tris-EDTA buffer (pH 9.0). This data was developed using the same antibody clone with 19950-1-PBS in a different storage buffer formulation.



Immunohistochemical analysis of paraffin-embedded mouse ovary tissue slide using 19950-1-AP (GNRHR antibody) at dilution of 1:1000 (under 10x lens). Heat mediated antigen retrieval with Tris-EDTA buffer (pH 9.0). This data was developed using the same antibody clone with 19950-1-PBS in a different storage buffer formulation.