

For Research Use Only

# CELSR2 Polyclonal antibody, PBS Only

Catalog Number:19940-1-PBS



## Basic Information

Catalog Number:

19940-1-PBS

Size:

1 mg/ml

Source:

Rabbit

Isotype:

IgG

GenBank Accession Number:

NM\_001408

GeneID (NCBI):

1952

UNIPROT ID:

Q9HCU4

Full Name:

cadherin, EGF LAG seven-pass G-type receptor 2 (flamingo homolog, Drosophila)

Calculated MW:

318 kDa

Purification Method:

Antigen affinity purification

## Applications

Tested Applications:

IHC, IF/ICC, Indirect ELISA

Species Specificity:

human, mouse

## Background Information

CELSR2, also named CDHF10, EGFL2, KIAA0279, and MEGF3, belongs to the G-protein coupled receptor 2 family and LN-TM7 subfamily. It is a receptor that may have an important role in cell/cell signaling during nervous system formation.

## Storage

Storage:

Store at -80°C.

**The product is shipped with ice packs. Upon receipt, store it immediately at -80°C**

Storage Buffer:

PBS Only

For technical support and original validation data for this product please contact:

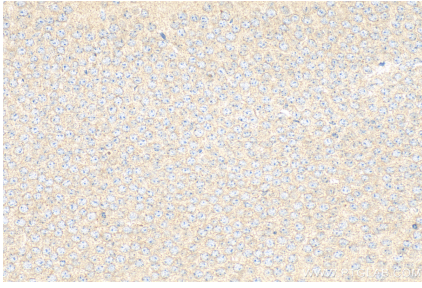
T: 4006900926

E: [Proteintech-CN@ptglab.com](mailto:Proteintech-CN@ptglab.com)

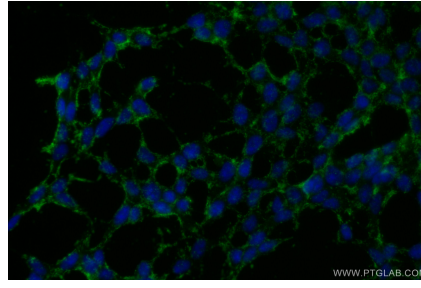
W: [ptgcn.com](http://ptgcn.com)

**This product is exclusively available under Proteintech Group brand and is not available to purchase from any other manufacturer.**

## Selected Validation Data



Immunohistochemical analysis of paraffin-embedded mouse brain tissue slide using 19940-1-AP (CELSR2 antibody) at dilution of 1:200 (under 40x lens). Heat mediated antigen retrieval with Tris-EDTA buffer (pH 9.0). This data was developed using the same antibody clone with 19940-1-PBS in a different storage buffer formulation.



Immunofluorescent analysis of (-20°C Ethanol) fixed SH-SY5Y cells using CELSR2 antibody (19940-1-AP) at dilution of 1:400 and CoraLite® 488-Conjugated AffiniPure Goat Anti-Rabbit IgG(H+L) (SA00013-2). This data was developed using the same antibody clone with 19940-1-PBS in a different storage buffer formulation.