

For Research Use Only

# CALHM2 Polyclonal antibody

Catalog Number: 19931-1-AP

2 Publications



## Basic Information

Catalog Number:

19931-1-AP

Size:

500 µg/ml

Source:

Rabbit

Isotype:

IgG

Immunogen Catalog Number:

AG13909

GenBank Accession Number:

BC000039

GeneID (NCBI):

51063

UNIPROT ID:

Q9HA72

Full Name:

calcium homeostasis modulator 2

Calculated MW:

323 aa, 36 kDa

Observed MW:

32-36 kDa

Purification Method:

Antigen affinity purification

Recommended Dilutions:

WB 1:200-1:1000

IHC 1:50-1:500

IF/ICC 1:200-1:800

## Applications

Tested Applications:

WB, IF/ICC, IHC, ELISA

Cited Applications:

WB, IF

Species Specificity:

human, mouse, rat

Cited Species:

rat, mouse

**Note-IHC: suggested antigen retrieval with TE buffer pH 9.0; (\*) Alternatively, antigen retrieval may be performed with citrate buffer pH 6.0**

Positive Controls:

WB : mouse brain tissue,

IHC : human placenta tissue,

IF/ICC : U2OS cells,

## Background Information

CALHM2, also named as FAM26B, is a pore-forming subunit of a voltage-gated ion channel. It's a critical ATP-releasing channel that modulates neural activity and as a potential risk factor of depression. There're three isoforms of CALHM2 with calculated MW 36 kDa, 24 kDa and 22 kDa. It's about 32-36 kDa in western blot with membrane protein extraceted lysate.

## Notable Publications

Author	Pubmed ID	Journal	Application
Xiaohui Li	37926398	Brain Res Bull	IF
Wen-Jing Ren	37183178	Cereb Cortex	WB

## Storage

Storage:

Store at -20°C. Stable for one year after shipment.

Storage Buffer:

PBS with 0.02% sodium azide and 50% glycerol pH 7.3.

Aliquoting is unnecessary for -20°C storage

For technical support and original validation data for this product please contact:

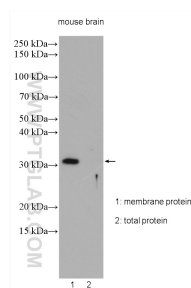
T: 4006900926

E: [Proteintech-CN@ptglab.com](mailto:Proteintech-CN@ptglab.com)

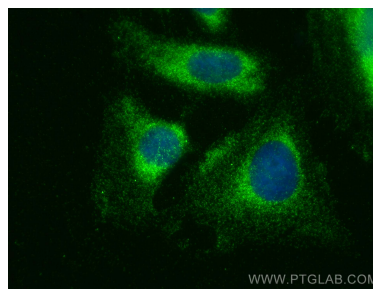
W: [ptgcn.com](http://ptgcn.com)

This product is exclusively available under Proteintech Group brand and is not available to purchase from any other manufacturer.

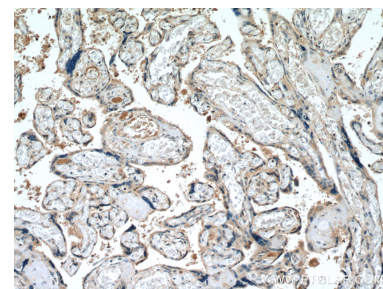
## Selected Validation Data



Mouse brain extracted membrane protein and total protein lysates were subjected to SDS PAGE followed by western blot with 19931-1-AP (CALHM2 antibody) at dilution of 1:300 incubated at room temperature for 1.5 hours.



Immunofluorescent analysis of (-20°C Methanol) fixed U2OS cells using CALHM2 antibody (19931-1-AP) at dilution of 1:400 and CoraLite® 488-Conjugated AffiniPure Goat Anti-Rabbit IgG(H+L).



Immunohistochemical analysis of paraffin-embedded human placenta tissue slide using 19931-1-AP (CALHM2 antibody) at dilution of 1:200 (under 10x lens. Heat mediated antigen retrieval with Tris-EDTA buffer (pH 9.0).