

For Research Use Only

METTL16 Polyclonal antibody

Catalog Number: 19924-1-AP

Featured Product

20 Publications



Basic Information

Catalog Number:

19924-1-AP

Concentration:

550 µg/ml

Source:

Rabbit

Isotype:

IgG

Immunogen Catalog Number:

AG13889

GenBank Accession Number:

BC001213

GeneID (NCBI):

79066

UNIPROT ID:

Q86W50

Full Name:

methyltransferase 10 domain containing

Calculated MW:

562 aa, 64 kDa

Observed MW:

70-75 kDa

Purification Method:

Antigen affinity purification

Recommended Dilutions:

WB 1:2000-1:10000

IHC 1:500-1:2000

Applications

Tested Applications:

WB, IHC, ELISA

Cited Applications:

WB, IHC, IF

Species Specificity:

human, rat, mouse

Cited Species:

human, mouse, rat

Note-IHC: suggested antigen retrieval with TE buffer pH 9.0; (*) Alternatively, antigen retrieval may be performed with citrate buffer pH 6.0

Positive Controls:

WB : HeLa cells, rat testis tissue, NCI-H1299 cells, NIH/3T3 cells, mouse testis tissue

IHC : human colon tissue, mouse testis tissue

Background Information

Methyltransferase-like protein 16 (METTL16) is a human RNA methyltransferase that installs m6A marks on U6 small nuclear RNA (U6 snRNA) and S-adenosylmethionine (SAM) synthetase pre-mRNA. METTL16 is considered a protective gene, suppressing the development of OC, HCC, and endocrine system tumors (PMID: 33237039, PMID: 33133142, PMID: 34187307). However, the high expression of METTL16 has been linked with a poor survival rate in patients with breast cancer (PMID: 33362863). METTL16 has 2 isoforms with molecular weights of 64 and 26 kDa.

Notable Publications

Author	Pubmed ID	Journal	Application
Fanhua Kong	36434140	Discov Oncol	WB
Deguan Lv	35659339	Dev Cell	WB
Feng Jiang	35035657	Oxid Med Cell Longev	WB

Storage

Storage:

Store at -20°C. Stable for one year after shipment.

Storage Buffer:

PBS with 0.02% sodium azide and 50% glycerol

Aliquoting is unnecessary for -20°C storage

For technical support and original validation data for this product please contact:

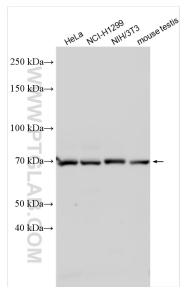
T: 4006900926

E: Proteintech-CN@ptglab.com

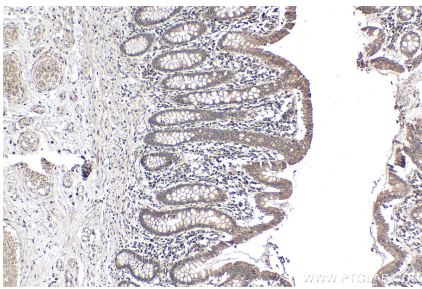
W: ptgcn.com

This product is exclusively available under Proteintech Group brand and is not available to purchase from any other manufacturer.

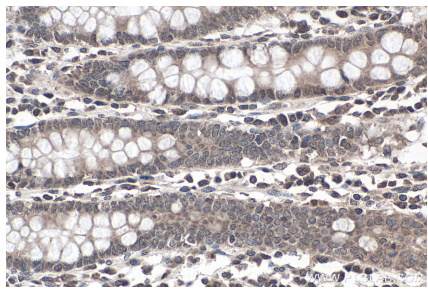
Selected Validation Data



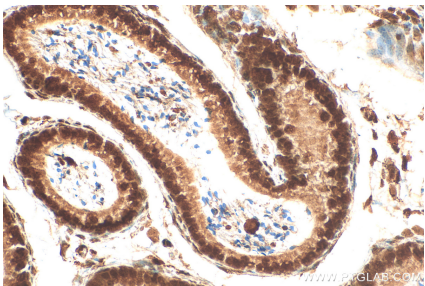
Various lysates were subjected to SDS PAGE followed by western blot with 19924-1-AP (METTL16 antibody) at dilution of 1:5000 incubated at room temperature for 1.5 hours.



Immunohistochemical analysis of paraffin-embedded human colon tissue slide using 19924-1-AP (METTL16 antibody) at dilution of 1:1000 (under 10x lens). Heat mediated antigen retrieval with Tris-EDTA buffer (pH 9.0).



Immunohistochemical analysis of paraffin-embedded human colon tissue slide using 19924-1-AP (METTL16 antibody) at dilution of 1:1000 (under 40x lens). Heat mediated antigen retrieval with Tris-EDTA buffer (pH 9.0).



Immunohistochemical analysis of paraffin-embedded mouse testis tissue slide using 19924-1-AP (METTL16 antibody) at dilution of 1:400 (under 40x lens). Heat mediated antigen retrieval with Tris-EDTA buffer (pH 9.0).