

For Research Use Only

# BZW1 Polyclonal antibody

Catalog Number: 19917-1-AP **2 Publications**



## Basic Information

**Catalog Number:**

19917-1-AP

**Size:**

900 µg/ml

**Source:**

Rabbit

**Isotype:**

IgG

**Immunogen Catalog Number:**

AG13830

**GenBank Accession Number:**

BC001804

**GeneID (NCBI):**

9689

**UNIPROT ID:**

Q7L1Q6

**Full Name:**

basic leucine zipper and W2 domains

1

**Calculated MW:**

353 aa, 41 kDa

**Observed MW:**

48 kDa

**Purification Method:**

Antigen affinity purification

**Recommended Dilutions:**

WB 1:500-1:3000

IHC 1:20-1:200

IF 1:10-1:100

## Applications

**Tested Applications:**

IF/ICC, IHC, WB, ELISA

**Cited Applications:**

WB, IF, IHC

**Species Specificity:**

human

**Cited Species:**

human, mouse

**Note-IHC: suggested antigen retrieval with TE buffer pH 9.0; (\*) Alternatively, antigen retrieval may be performed with citrate buffer pH 6.0**

**Positive Controls:**

WB : MCF7 cells, HeLa cells

IHC : human testis tissue, human lung cancer tissue

IF : HeLa cells,

## Background Information

### Notable Publications

Author	Pubmed ID	Journal	Application
Boaz Nachmias	35152270	Leukemia	WB,IF
Linyao Zhao	36907429	Genomics	WB,IHC,IF

## Storage

**Storage:**

Store at -20°C. Stable for one year after shipment.

**Storage Buffer:**

PBS with 0.02% sodium azide and 50% glycerol pH 7.3.

Aliquoting is unnecessary for -20°C storage

For technical support and original validation data for this product please contact:

T: 4006900926

E: Proteintech-CN@ptglab.com

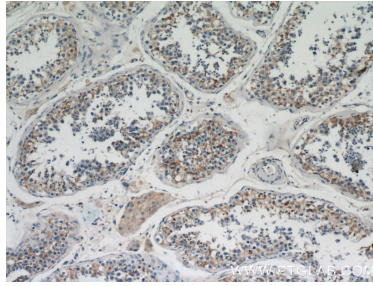
W: ptgcn.com

**This product is exclusively available under Proteintech Group brand and is not available to purchase from any other manufacturer.**

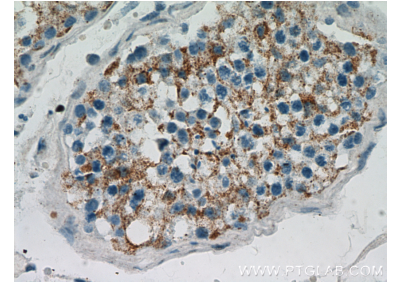
## Selected Validation Data



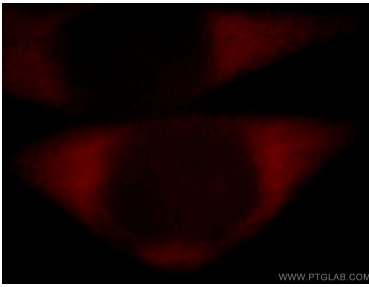
MCF7 cells were subjected to SDS PAGE followed by western blot with 19917-1-AP (BZW1 antibody) at dilution of 1:500 incubated at room temperature for 1.5 hours.



Immunohistochemical analysis of paraffin-embedded human testis using 19917-1-AP (BZW1 antibody) at dilution of 1:100 (under 10x lens).



Immunohistochemical analysis of paraffin-embedded human testis using 19917-1-AP (BZW1 antibody) at dilution of 1:100 (under 40x lens).



Immunofluorescent analysis of HeLa cells, using BZW1 antibody 19917-1-AP at 1:25 dilution and Rhodamine-labeled goat anti-rabbit IgG (red).