

For Research Use Only

# SI-CLP,CHID1 Polyclonal antibody

Catalog Number:19900-1-AP



## Basic Information

Catalog Number:

19900-1-AP

Size:

170 µg/ml

Source:

Rabbit

Isotype:

IgG

Immunogen Catalog Number:

AG13806

GenBank Accession Number:

BC000001

GeneID (NCBI):

66005

UNIPROT ID:

Q9BWS9

Full Name:

chitinase domain containing 1

Calculated MW:

393 aa, 45 kDa

Observed MW:

42-48 kDa

Purification Method:

Antigen affinity purification

Recommended Dilutions:

WB 1:500-1:1000

## Applications

Tested Applications:

WB, ELISA

Species Specificity:

human

Positive Controls:

WB : HEK-293 cells, U-251 cells

## Background Information

CHID1 (chitinase domain containing protein 1) is a member of the Glyco\_18 domain-containing proteins family, expressed by type 2 macrophages upon their stimulation with interleukin (IL)-4 and glucocorticoids. Expression of CHID1 is documented for TAMs in various tumors, but its role in tumor development remains unclear. (PMID: 33466316)

## Storage

Storage:

Store at -20°C. Stable for one year after shipment.

Storage Buffer:

PBS with 0.02% sodium azide and 50% glycerol pH 7.3.

Aliquoting is unnecessary for -20°C storage

For technical support and original validation data for this product please contact:

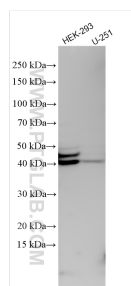
T: 4006900926

E: [Proteintech-CN@ptglab.com](mailto:Proteintech-CN@ptglab.com)

W: [ptgcn.com](http://ptgcn.com)

This product is exclusively available under Proteintech Group brand and is not available to purchase from any other manufacturer.

## Selected Validation Data



HEK-293 cells were subjected to SDS PAGE followed by western blot with 19900-1-AP (SI-CLP,CHID1 antibody) at dilution of 1:800 incubated at room temperature for 1.5 hours.