

For Research Use Only

GHRH Polyclonal antibody

Catalog Number: 19896-1-AP



Basic Information

| | | |
|---|---|--|
| Catalog Number: 19896-1-AP | GenBank Accession Number: BC098161 | Purification Method: Antigen affinity purification |
| Source: Rabbit | GeneID (NCBI): 2691 | Recommended Dilutions: IHC: 1:200-1:800 |
| Isotype: IgG | UNIPROT ID: P01286 | |
| Immunogen Catalog Number: AG13787 | Full Name: growth hormone releasing hormone | |
| | Calculated MW: 108 aa, 12 kDa | |

Applications

| | |
|--|---|
| Tested Applications: IHC, ELISA | Positive Controls: IHC : human colon cancer tissue, human stomach cancer tissue |
| Species Specificity: human | |
| Note-IHC: suggested antigen retrieval with TE buffer pH 9.0; (*) Alternatively, antigen retrieval may be performed with citrate buffer pH 6.0 | |

Background Information

GHRH, also known as GHRF, belongs to the glucagon family. GHRH is a hypothalamic peptide that stimulates synthesis and proliferation of pituitary somatotroph cells as well as secretion of growth hormone. GHRH expression is predominantly in the human hypothalamus, with some expression in the basal ganglia (PMID: 39913072). Defects in GHRH are a cause of dwarfism, while hypersecretion of GHRH is a cause of gigantism.

Storage

Storage:
Store at -20°C. Stable for one year after shipment.
Storage Buffer:
PBS with 0.02% sodium azide and 50% glycerol, pH7.3
Aliquoting is unnecessary for -20°C storage

For technical support and original validation data for this product please contact:

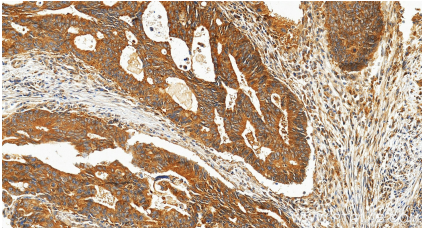
T: 4006900926

E: Proteintech-CN@ptglab.com

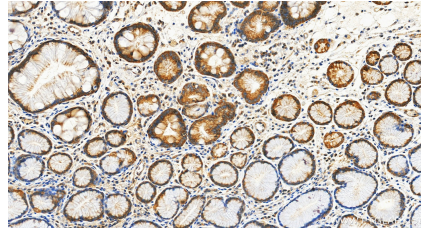
W: ptgcn.com

This product is exclusively available under Proteintech Group brand and is not available to purchase from any other manufacturer.

Selected Validation Data



Immunohistochemical analysis of paraffin-embedded human colon cancer tissue slide using 19896-1-AP (GHRH antibody) at dilution of 1:400 (under 20x lens). Heat mediated antigen retrieval with Tris-EDTA buffer (pH 9.0).



Immunohistochemical analysis of paraffin-embedded human stomach cancer tissue slide using 19896-1-AP (GHRH antibody) at dilution of 1:400 (under 20x lens). Heat mediated antigen retrieval with Tris-EDTA buffer (pH 9.0).