

For Research Use Only

PHD2/EGLN1 Polyclonal antibody

Catalog Number:19886-1-AP

Featured Product

16 Publications



Basic Information

Catalog Number:

19886-1-AP

Concentration:

500 ug/ml

Source:

Rabbit

Isotype:

IgG

Immunogen Catalog Number:

AG13706

GenBank Accession Number:

BC005369

GeneID (NCBI):

54583

UNIPROT ID:

Q9GZT9

Full Name:

egl nine homolog 1 (C. elegans)

Calculated MW:

426 aa, 46 kDa

Observed MW:

46 kDa

Purification Method:

Antigen affinity purification

Recommended Dilutions:

WB 1:5000-1:50000

IP 0.5-4.0 ug for 1.0-3.0 mg of total protein lysate

IHC 1:50-1:500

IF/ICC 1:200-1:800

Applications

Tested Applications:

WB, IHC, IF/ICC, IP, ELISA

Cited Applications:

WB, IHC

Species Specificity:

human, mouse, rat

Cited Species:

human, mouse, rat

Note-IHC: suggested antigen retrieval with TE buffer pH 9.0; (*) Alternatively, antigen retrieval may be performed with citrate buffer pH 6.0

Positive Controls:

WB : HCT 116 cells, mouse kidney tissue, rat heart tissue, HEK-293 cells, HEK-293T cells, HepG2 cells

IP : HEK-293 cells,

IHC : human liver cancer tissue,

IF/ICC : A431 cells,

Background Information

EGLN1(Egl nine homolog 1) is also named as HIF-PH2,HPH-2,PHD2.It is the most important isozyme under normoxia and, through regulating the stability of HIF1, involved in various hypoxia-influenced processes such as angiogenesis in retinal and cardiac functionality. EGLN1 plays a critical role in regulating HIF levels in EPO-producing cells in humans(PMID:16407130).Defects in EGLN1 are the cause of familial erythrocytosis type 3 (ECYT3).This antibody is specific to EGLN1.

Notable Publications

Author	Pubmed ID	Journal	Application
Chenzhong Wang	36162153	Tissue Cell	IHC
Haixu Xu	35589690	Cell Death Dis	WB
Deng Guan	33713969	J Inorg Biochem	WB

Storage

Storage:

Store at -20°C. Stable for one year after shipment.

Storage Buffer:

PBS with 0.02% sodium azide and 50% glycerol pH 7.3.

Aliquoting is unnecessary for -20°C storage

For technical support and original validation data for this product please contact:

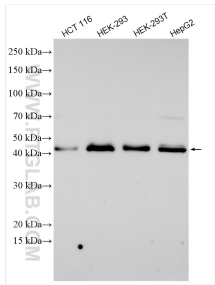
T: 4006900926

E: Proteintech-CN@ptglab.com

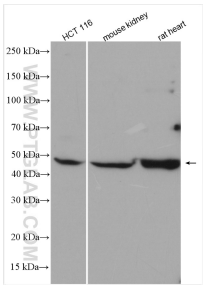
W: ptgcn.com

This product is exclusively available under Proteintech Group brand and is not available to purchase from any other manufacturer.

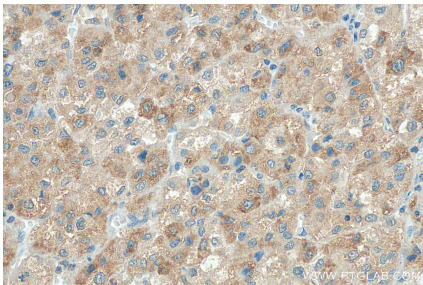
Selected Validation Data



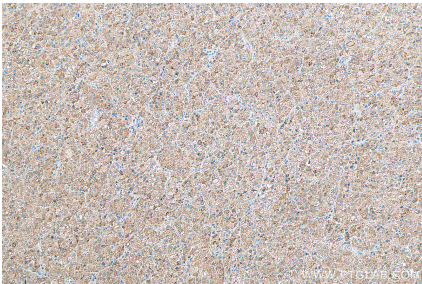
Various lysates were subjected to SDS PAGE followed by western blot with 19886-1-AP (PHD2/EGLN1 antibody) at dilution of 1:10000 incubated at room temperature for 1.5 hours.



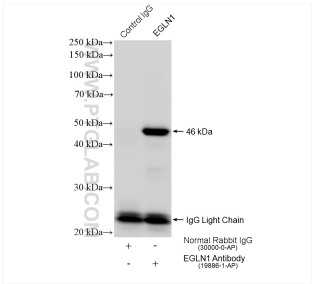
Various lysates were subjected to SDS PAGE followed by western blot with 19886-1-AP (PHD2/EGLN1 antibody) at dilution of 1:800 incubated at room temperature for 1.5 hours.



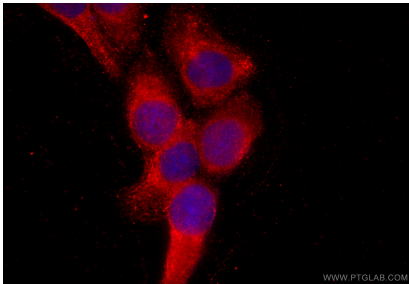
Immunohistochemical analysis of paraffin-embedded human liver cancer tissue slide using 19886-1-AP (PHD2/EGLN1 antibody) at dilution of 1:200 (under 40x lens). Heat mediated antigen retrieval with Tris-EDTA buffer (pH 9.0).



Immunohistochemical analysis of paraffin-embedded human liver cancer tissue slide using 19886-1-AP (PHD2/EGLN1 antibody) at dilution of 1:200 (under 10x lens). Heat mediated antigen retrieval with Tris-EDTA buffer (pH 9.0).



IP result of anti-PHD2/EGLN1 (IP:19886-1-AP, 4ug; Detection:19886-1-AP 1:5000) with HEK-293 cells lysate 1280 ug.



Immunofluorescent analysis of (-20°C Methanol) fixed A431 cells using PHD2/EGLN1 antibody (19886-1-AP) at dilution of 1:400 and CoraLite®594-Conjugated Goat Anti-Rabbit IgG(H+L) (SA00013-4).