

Spermidine synthase Polyclonal antibody

Catalog Number: 19858-1-AP

13 Publications

Basic Information

Catalog Number:

19858-1-AP

Size:

550 µg/ml

Source:

Rabbit

Isotype:

IgG

Immunogen Catalog Number:

AG13936

GenBank Accession Number:

BC000309

GeneID (NCBI):

6723

UNIPROT ID:

P19623

Full Name:

spermidine synthase

Calculated MW:

302 aa, 34 kDa

Observed MW:

34 kDa

Purification Method:

Antigen affinity purification

Recommended Dilutions:

WB 1:500-1:3000

IP 0.5-4.0 µg for 1.0-3.0 mg of total protein lysate

IHC 1:250-1:1000

IF/ICC 1:50-1:500

Applications

Tested Applications:

WB, IHC, IF/ICC, IP, ELISA

Cited Applications:

WB, IHC, IF

Species Specificity:

human, mouse, rat

Cited Species:

human, mouse

Positive Controls:

WB: HeLa cells, LNCaP cells, HepG2 cells, PC-3 cells, mouse liver tissue, rat liver tissue, RAW 264.7 cells, mouse brain tissue

IP: mouse liver tissue,

IHC: human kidney tissue, human liver cancer tissue

IF/ICC: HepG2 cells,

Note-IHC: suggested antigen retrieval with *TE buffer pH 9.0*; (*) Alternatively, antigen retrieval may be performed with *citrate buffer pH 6.0*

Background Information

Spermidine synthase is an enzyme that catalyzes the transfer of the propylamine group from S-adenosylmethionine to putrescine in the biosynthesis of spermidine. The polyamines putrescine, spermine, and spermidine are ubiquitous polycationic mediators of cell growth and differentiation. Spermidine synthases catalyze the production of the linear triamine, spermidine, from putrescine. They utilize decarboxylated S-adenosylmethionine (dc-SAM), a universal cofactor of aminopropyltransferases, as a donor of the aminopropyl moiety (PMID:31134111).

Notable Publications

Author	Pubmed ID	Journal	Application
Takeshi Uemura	32995657	Heliyon	WB
Hongming Miao	27189574	Nat Commun	WB, IF
Fumihiko Urabe	32558033	Cancer Sci	WB

Storage

Storage:

Store at -20°C. Stable for one year after shipment.

Storage Buffer:

PBS with 0.02% sodium azide and 50% glycerol pH 7.3.

Aliquoting is unnecessary for -20°C storage

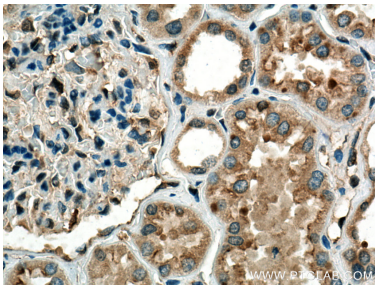
For technical support and original validation data for this product please contact:

T: 4006900926

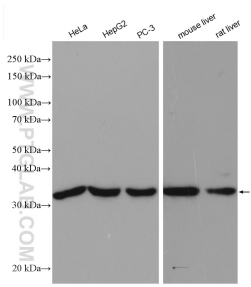
E: Proteintech-CN@ptglab.comW: ptgcn.com

This product is exclusively available under Proteintech Group brand and is not available to purchase from any other manufacturer.

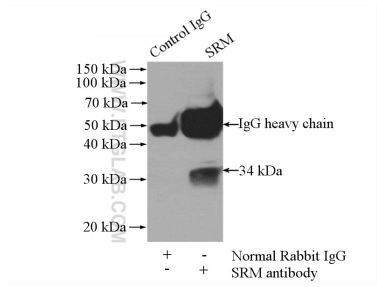
Selected Validation Data



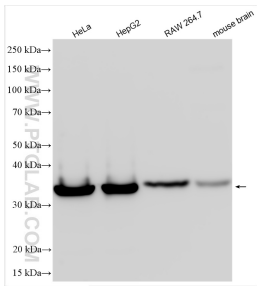
Immunohistochemical analysis of paraffin-embedded human kidney tissue slide using 19858-1-AP (Spermidine synthase antibody) at dilution of 1:500 (under 40x lens). Heat mediated antigen retrieval with Tris-EDTA buffer (pH 9.0).



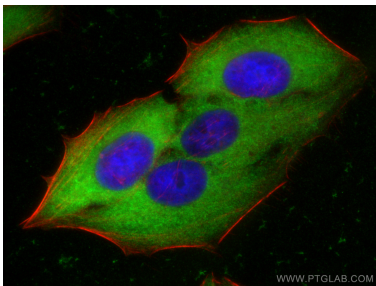
Various lysates were subjected to SDS PAGE followed by western blot with 19858-1-AP (Spermidine synthase antibody) at dilution of 1:1500 incubated at room temperature for 1.5 hours.



IP result of anti-Spermidine synthase (IP:19858-1-AP, 4ug; Detection:19858-1-AP 1:500) with mouse liver tissue lysate 4000ug.



HeLa cells were subjected to SDS PAGE followed by western blot with 19858-1-AP (Spermidine synthase antibody) at dilution of 1:6000 incubated at room temperature for 1.5 hours.



Immunofluorescent analysis of (-20°C Ethanol) fixed HepG2 cells using Spermidine synthase antibody (19858-1-AP) at dilution of 1:200 and Coralite® 488-Conjugated Goat Anti-Rabbit IgG(H+L), CL594-phalloidin (red).