

For Research Use Only

TMX2 Polyclonal antibody

Catalog Number: 19838-1-AP

Featured Product



Basic Information

Catalog Number:

19838-1-AP

Size:

650 µg/ml

Source:

Rabbit

Isotype:

IgG

Immunogen Catalog Number:

AG13828

GenBank Accession Number:

BC000666

GeneID (NCBI):

51075

UNIPROT ID:

Q9Y320

Full Name:

thioredoxin-related transmembrane protein 2

Calculated MW:

296 aa, 34 kDa

Observed MW:

30 kDa, 34 kDa

Purification Method:

Antigen affinity purification

Recommended Dilutions:

WB 1:2000-1:10000

IHC 1:20-1:200

Applications

Tested Applications:

IHC, WB, ELISA

Species Specificity:

human, mouse, rat

Note-IHC: suggested antigen retrieval with TE buffer pH 9.0; (*) Alternatively, antigen retrieval may be performed with citrate buffer pH 6.0

Positive Controls:

WB: human placenta tissue, HeLa cells, mouse placenta tissue, mouse testis tissue, rat tissue

IHC: human kidney tissue, human pancreas tissue

Background Information

Thioredoxin-related transmembrane proteins (TMXs) are protein disulfide isomerase (PDI) family members and possess a transmembrane region. TMX2 cDNA was first isolated in 2003, and TMX2 mRNA has been found in a variety of human tissues, with the highest levels in the heart, brain, liver, kidney, and pancreas.

Storage

Storage:

Store at -20°C. Stable for one year after shipment.

Storage Buffer:

PBS with 0.02% sodium azide and 50% glycerol pH 7.3.

Aliquoting is unnecessary for -20°C storage

For technical support and original validation data for this product please contact:

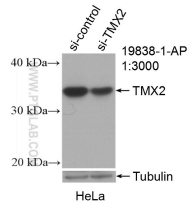
T: 4006900926

E: Proteintech-CN@ptglab.com

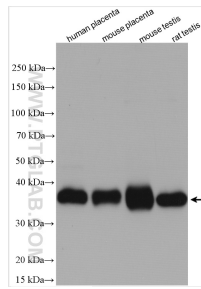
W: ptgcn.com

This product is exclusively available under Proteintech Group brand and is not available to purchase from any other manufacturer.

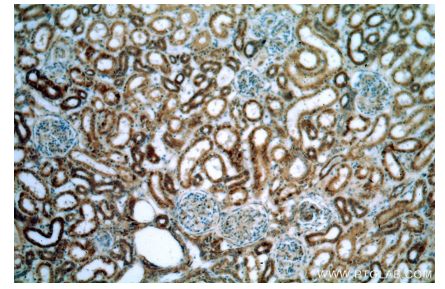
Selected Validation Data



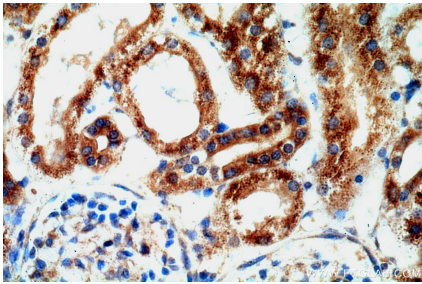
WB result of TMX2 antibody (19838-1-AP; 1:3000; incubated at room temperature for 1.5 hours) with sh-Control and sh-TMX2 transfected HeLa cells.



Various lysates were subjected to SDS PAGE followed by western blot with 19838-1-AP (TMX2 antibody) at dilution of 1:5000 incubated at room temperature for 1.5 hours.



Immunohistochemical analysis of paraffin-embedded human kidney using 19838-1-AP (TMX2 antibody) at dilution of 1:200 (under 10x lens).



Immunohistochemical analysis of paraffin-embedded human kidney using 19838-1-AP (TMX2 antibody) at dilution of 1:200 (under 40x lens).