

For Research Use Only

STAG2 Polyclonal antibody

Catalog Number: 19837-1-AP **1 Publications**



Basic Information

Catalog Number: 19837-1-AP	GenBank Accession Number: BC001765	Purification Method: Antigen affinity purification
Size: 700 µg/ml	GeneID (NCBI): 10735	Recommended Dilutions: WB 1:1000-1:4000
Source: Rabbit	UNIPROT ID: Q8N3U4	IP 0.5-4.0 µg for 1.0-3.0 mg of total protein lysate
Isotype: IgG	Full Name: stromal antigen 2	IHC 1:20-1:200
Immunogen Catalog Number: AG13825	Calculated MW: 1231 aa, 141 kDa	IF 1:10-1:100
	Observed MW: 130-141 kDa	

Applications

Tested Applications: IF/ICC, IHC, IP, WB, ELISA	Positive Controls:
Cited Applications: WB	WB: Jurkat cells, HeLa cells, K-562 cells, MCF-7 cells, NIH/3T3 cells
Species Specificity: human, mouse, rat	IP: U-251 cells, MCF-7 cells
Cited Species: human	IHC: human cervical cancer tissue,
Note-IHC: suggested antigen retrieval with TE buffer pH 9.0; (*) Alternatively, antigen retrieval may be performed with citrate buffer pH 6.0	IF: HEK-293 cells,

Background Information

STAG2, also named as SA2, is a component of cohesin complex, a complex required for the cohesion of sister chromatids after DNA replication. The cohesin complex may play a role in spindle pole assembly during mitosis. Mutations in STAG2 appear to be a first step in the transformation of a normal cell into a cancer cell.

Notable Publications

Author	Pubmed ID	Journal	Application
Luwei He	34268906	Cancer Commun (Lond)	WB

Storage

Storage:
Store at -20°C. Stable for one year after shipment.
Storage Buffer:
PBS with 0.02% sodium azide and 50% glycerol pH 7.3.
Aliquoting is unnecessary for -20°C storage

For technical support and original validation data for this product please contact:

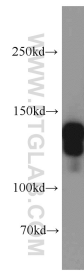
T: 4006900926

E: Proteintech-CN@ptglab.com

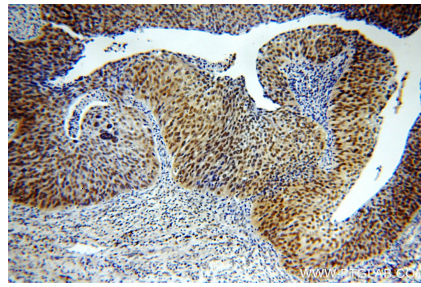
W: ptgcn.com

This product is exclusively available under Proteintech Group brand and is not available to purchase from any other manufacturer.

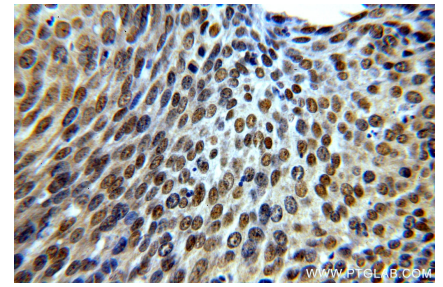
Selected Validation Data



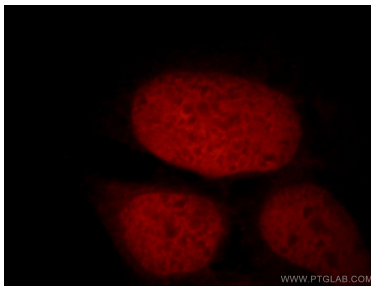
Jurkat cells were subjected to SDS PAGE followed by western blot with 19837-1-AP (STAG2 antibody) at dilution of 1:1000 incubated at room temperature for 1.5 hours.



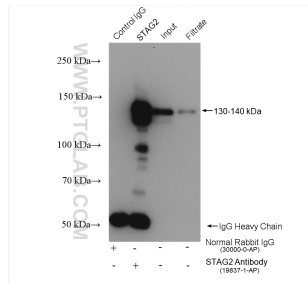
Immunohistochemical analysis of paraffin-embedded human cervical cancer using 19837-1-AP (STAG2 antibody) at dilution of 1:100 (under 10x lens).



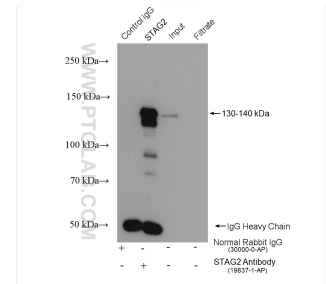
Immunohistochemical analysis of paraffin-embedded human cervical cancer using 19837-1-AP (STAG2 antibody) at dilution of 1:100 (under 40x lens).



Immunofluorescent analysis of 293 cells, using STAG2 antibody 19837-1-AP at 1:25 dilution and Rhodamine-labeled goat anti-rabbit IgG (red).



IP result of anti-STAG2 (IP:19837-1-AP, 4ug; Detection:19837-1-AP 1:3000) with MCF-7 cells lysate 2120 ug.



IP result of anti-STAG2 (IP:19837-1-AP, 4ug; Detection:19837-1-AP 1:3000) with U-251 cells lysate 3320 ug.