

For Research Use Only

# SPG21 Polyclonal antibody, PBS Only

Catalog Number:19815-1-PBS



## Basic Information

Catalog Number:

19815-1-PBS

Source:

Rabbit

Isotype:

IgG

Immunogen Catalog Number:

AG13851

GenBank Accession Number:

BC000244

GeneID (NCBI):

51324

UNIPROT ID:

Q9NZD8

Full Name:

spastic paraplegia 21 (autosomal recessive, Mast syndrome)

Calculated MW:

308 aa, 35 kDa

Observed MW:

35 kDa

Purification Method:

Antigen affinity purification

## Applications

Tested Applications:

WB, Indirect ELISA

Species Specificity:

human

## Background Information

SPG21, also known as Maspardin, is a protein encoded by the SPG21 gene on human chromosome 15q22.31. SPG21 is critical for the proper movement and positioning of lysosomes within neurons, which is essential for maintaining axonal health. Mutations in the SPG21 gene underlie hereditary spastic paraplegia (SPG) type 21 (also known as Mast syndrome). This is a complex form of SPG characterized by motor coordination defects due to axonal degeneration of corticospinal neurons and associated with dementia, cerebellar, and extrapyramidal abnormalities and, in some cases, seizures.(PMID: 41400694,PMID: 34492745)

## Storage

Storage:

Store at -80°C.

**The product is shipped with ice packs. Upon receipt, store it immediately at -80°C**

Storage Buffer:

PBS only, pH7.3

For technical support and original validation data for this product please contact:

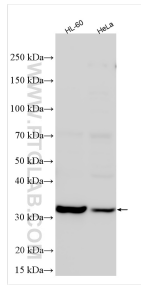
T: 4006900926

E: [Proteintech-CN@ptglab.com](mailto:Proteintech-CN@ptglab.com)

W: [ptgcn.com](http://ptgcn.com)

**This product is exclusively available under Proteintech Group brand and is not available to purchase from any other manufacturer.**

## Selected Validation Data



Various lysates were subjected to SDS PAGE followed by western blot with 19815-1-AP (SPG21 antibody) at dilution of 1:1000 incubated at room temperature for 1.5 hours. This data was developed using the same antibody clone with 19815-1-PBS in a different storage buffer formulation.