

For Research Use Only

# CCT6A-Specific Polyclonal antibody, PBS Only

Catalog Number:19793-1-PBS



## Basic Information

Catalog Number:

19793-1-PBS

Concentration:

1 mg/ml

Source:

Rabbit

Isotype:

IgG

GenBank Accession Number:

NM\_001762

GeneID (NCBI):

908

UNIPROT ID:

P40227

Full Name:

chaperonin containing TCP1, subunit

6A (zeta 1)

Calculated MW:

58 kDa

Observed MW:

58 kDa

Purification Method:

Antigen affinity purification

## Applications

Tested Applications:

WB, IHC, IF/ICC, Indirect ELISA

Species Specificity:

human, mouse

## Background Information

CCT6A, also named as CCT6, CCTZ, CCT-zeta, Tcp20 and HTR3, belongs to the TCP-1 chaperonin family. CCT6A is a molecular chaperone which assists the folding of proteins upon ATP hydrolysis. CCT6A is known to play a role, in vitro, in the folding of actin and tubulin. The antibody has no cross reaction to CCT6B.

## Storage

Storage:

Store at -80°C.

The product is shipped with ice packs. Upon receipt, store it immediately at -80°C

Storage Buffer:

PBS only, pH7.3

For technical support and original validation data for this product please contact:

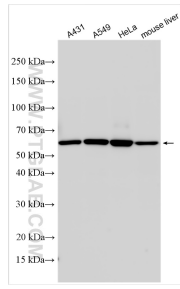
T: 4006900926

E: [Proteintech-CN@ptglab.com](mailto:Proteintech-CN@ptglab.com)

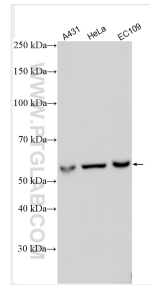
W: [ptgcn.com](http://ptgcn.com)

This product is exclusively available under Proteintech Group brand and is not available to purchase from any other manufacturer.

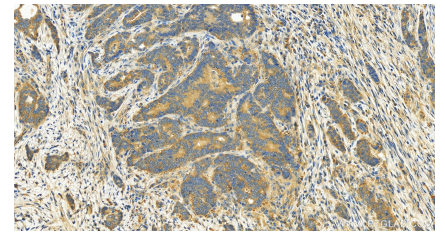
## Selected Validation Data



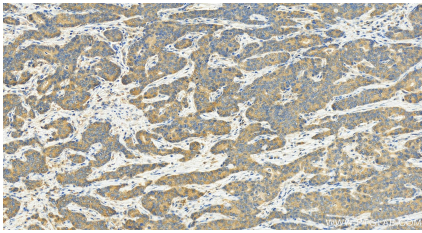
Various lysates were subjected to SDS PAGE followed by western blot with 19793-1-AP (CCT6A-Specific antibody) at dilution of 1:500 incubated at room temperature for 1.5 hours. This data was developed using the same antibody clone with 19793-1-PBS in a different storage buffer formulation.



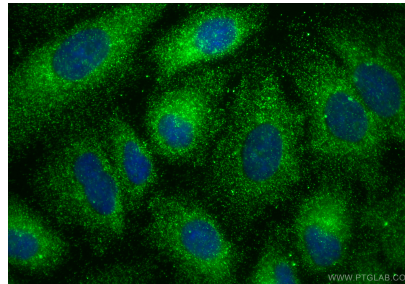
Various lysates were subjected to SDS PAGE followed by western blot with 19793-1-AP (CCT6A-Specific antibody) at dilution of 1:500 incubated at room temperature for 1.5 hours. This data was developed using the same antibody clone with 19793-1-PBS in a different storage buffer formulation.



Immunohistochemical analysis of paraffin-embedded stomach cancer slide using 19793-1-AP (CCT6A-Specific antibody) at dilution of 1:100 (under 20x lens). Heat mediated antigen retrieval with Tris-EDTA buffer (pH 9.0). This data was developed using the same antibody clone with 19793-1-PBS in a different storage buffer formulation.



Immunohistochemical analysis of paraffin-embedded stomach cancer slide using 19793-1-AP (CCT6A-Specific antibody) at dilution of 1:100 (under 20x lens). Heat mediated antigen retrieval with Tris-EDTA buffer (pH 9.0). This data was developed using the same antibody clone with 19793-1-PBS in a different storage buffer formulation.



Immunofluorescent analysis of (-20°C Methanol) fixed A549 cells using CCT6A-Specific antibody (19793-1-AP) at dilution of 1:400 and Coralite® 488-Conjugated Goat Anti-Rabbit IgG(H+L) (SA00013-2). This data was developed using the same antibody clone with 19793-1-PBS in a different storage buffer formulation.