

For Research Use Only

CCT6A-Specific Polyclonal antibody

Catalog Number: 19793-1-AP

7 Publications



Basic Information

Catalog Number:

19793-1-AP

Size:

150 ug/ml

Source:

Rabbit

Isotype:

IgG

GenBank Accession Number:

NM_001762

GeneID (NCBI):

908

UNIPROT ID:

P40227

Full Name:

chaperonin containing TCP1, subunit 6A (zeta 1)

Calculated MW:

58 kDa

Observed MW:

58 kDa

Purification Method:

Antigen affinity purification

Recommended Dilutions:

WB 1:500-1:1000

IHC 1:50-1:500

Applications

Tested Applications:

WB, IHC, ELISA

Cited Applications:

WB, IHC, IF, IP, CoIP

Species Specificity:

human, mouse

Cited Species:

human, mouse

Note-IHC: suggested antigen retrieval with TE buffer pH 9.0; (*) Alternatively, antigen retrieval may be performed with citrate buffer pH 6.0

Positive Controls:

WB : A431 cells, A549 cells, HeLa cells, mouse liver tissue, EC109 cells

IHC : human stomach cancer tissue,

Background Information

CCT6A, also named as CCT6, CCTZ, CCT-zeta, Tcp20 and HTR3, belongs to the TCP-1 chaperonin family. CCT6A is a molecular chaperone which assists the folding of proteins upon ATP hydrolysis. CCT6A is known to play a role, in vitro, in the folding of actin and tubulin. The antibody has no cross reaction to CCT6B.

Notable Publications

Author	Pubmed ID	Journal	Application
Hussein Kaddour	31676584	Mol Cell Proteomics	WB
Yuanyuan Zhang	26739059	Cancer Lett	WB
Xinyu Ma	35366418	Cell	WB,IF

Storage

Storage:

Store at -20°C. Stable for one year after shipment.

Storage Buffer:

PBS with 0.02% sodium azide and 50% glycerol pH 7.3.

Aliquoting is unnecessary for -20°C storage

For technical support and original validation data for this product please contact:

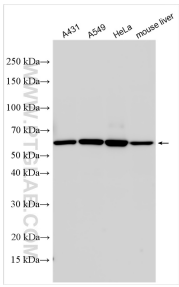
T: 4006900926

E: Proteintech-CN@ptglab.com

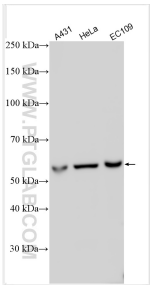
W: ptgcn.com

This product is exclusively available under Proteintech Group brand and is not available to purchase from any other manufacturer.

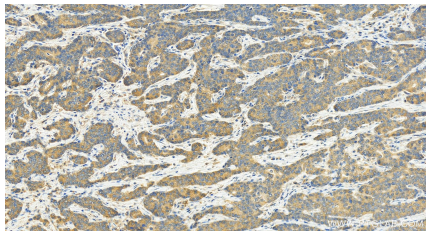
Selected Validation Data



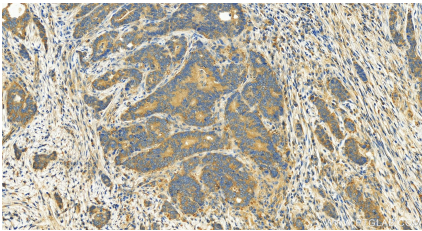
Various lysates were subjected to SDS PAGE followed by western blot with 19793-1-AP (CCT6A-Specific antibody) at dilution of 1:500 incubated at room temperature for 1.5 hours.



Various lysates were subjected to SDS PAGE followed by western blot with 19793-1-AP (CCT6A-Specific antibody) at dilution of 1:500 incubated at room temperature for 1.5 hours.



Immunohistochemical analysis of paraffin-embedded stomach cancer slide using 19793-1-AP (CCT6A-Specific antibody) at dilution of 1:100 (under 20x lens). Heat mediated antigen retrieval with Tris-EDTA buffer (pH 9.0).



Immunohistochemical analysis of paraffin-embedded stomach cancer slide using 19793-1-AP (CCT6A-Specific antibody) at dilution of 1:100 (under 20x lens). Heat mediated antigen retrieval with Tris-EDTA buffer (pH 9.0).