

For Research Use Only

# BCR-Specific Polyclonal antibody

Catalog Number: 19790-1-AP



## Basic Information

Catalog Number:

19790-1-AP

Size:

70 µg/ml

Source:

Rabbit

Isotype:

IgG

GenBank Accession Number:

NM\_004327

GeneID (NCBI):

613

UNIPROT ID:

P11274

Full Name:

breakpoint cluster region

Calculated MW:

143 kDa

Purification Method:

Antigen affinity purification

## Applications

Tested Applications:

IF/ICC, ELISA

Species Specificity:

human

## Background Information

BCR, also named as BCR1 and D22S11, is a GTPase-activating protein for RAC1 and CDC42. BCR promotes the exchange of RAC or CDC42-bound GDP by GTP, thereby activating them. BCR displays serine/threonine kinase activity. BCR catalyzes the reaction: ATP + a protein = ADP + a phosphoprotein. A chromosomal aberration involving BCR is a cause of chronic myeloid leukemia (CML). The antibody is specific to BCR.

## Storage

Storage:

Store at -20°C. Stable for one year after shipment.

Storage Buffer:

PBS with 0.02% sodium azide and 50% glycerol pH 7.3.

Aliquoting is unnecessary for -20°C storage

For technical support and original validation data for this product please contact:

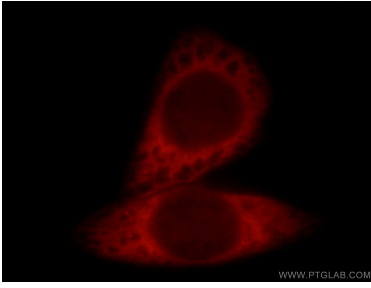
T: 4006900926

E: [Proteintech-CN@ptglab.com](mailto:Proteintech-CN@ptglab.com)

W: [ptgcn.com](http://ptgcn.com)

This product is exclusively available under Proteintech Group brand and is not available to purchase from any other manufacturer.

## Selected Validation Data



Immunofluorescent analysis of HeLa cells, using BCR antibody 19790-1-AP at 1:25 dilution and Rhodamine-labeled goat anti-rabbit IgG (red).