

For Research Use Only

AMPD1-Specific Polyclonal antibody



Catalog Number: 19780-1-AP

Featured Product

3 Publications

Basic Information

Catalog Number:

19780-1-AP

Size:

350 µg/ml

Source:

Rabbit

Isotype:

IgG

GenBank Accession Number:

NM_000036

GeneID (NCBI):

270

UNIPROT ID:

P23109

Full Name:

adenosine monophosphate deaminase 1 (isoform M)

Calculated MW:

87 kDa

Observed MW:

75-83 kDa

Purification Method:

Antigen affinity purification

Recommended Dilutions:

WB 1:500-1:3000

IP 0.5-4.0 µg for 1.0-3.0 mg of total protein lysate

IHC 1:50-1:500

Applications

Tested Applications:

IHC, IP, WB, ELISA

Cited Applications:

WB, IHC

Species Specificity:

human, mouse, rat

Cited Species:

human, mouse

Note-IHC: suggested antigen retrieval with TE buffer pH 9.0; (*) Alternatively, antigen retrieval may be performed with citrate buffer pH 6.0

Positive Controls:

WB: mouse skeletal muscle tissue,

IP: mouse skeletal muscle tissue,

IHC: mouse skeletal muscle tissue,

Background Information

AMPD1, also named as MAD and MADA, belongs to the adenosine and AMP deaminases family. AMP deaminase plays a critical role in energy metabolism. It catalyzes the reaction: AMP + H₂O = IMP + NH₃. Defects in AMPD1 are the cause of adenosine monophosphate deaminase deficiency muscle type (AMPDDM) which is a metabolic disorder resulting in exercise-related myopathy. The antibody is specific to AMPD1.

Notable Publications

Author	Pubmed ID	Journal	Application
Long Wang	34900696	Front Oncol	IHC
Zhenkang Chen	36598990	Sci Adv	WB
Ana Andres-Hernando	36994079	iScience	WB

Storage

Storage:

Store at -20°C. Stable for one year after shipment.

Storage Buffer:

PBS with 0.02% sodium azide and 50% glycerol pH 7.3.

Aliquoting is unnecessary for -20°C storage

For technical support and original validation data for this product please contact:

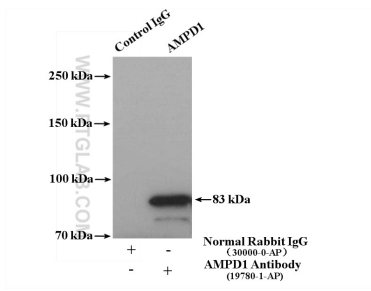
T: 4006900926

E: Proteintech-CN@ptglab.com

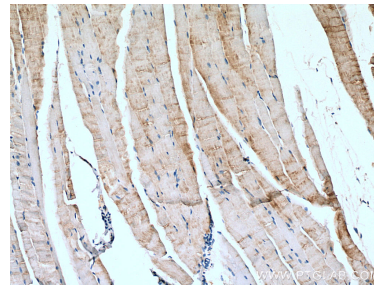
W: ptgcn.com

This product is exclusively available under Proteintech Group brand and is not available to purchase from any other manufacturer.

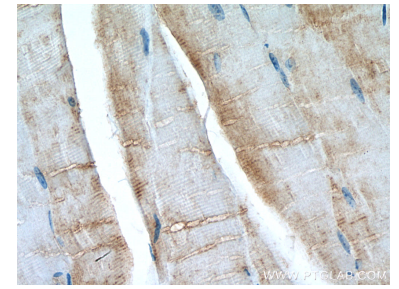
Selected Validation Data



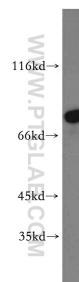
mouse skeletal muscle tissue were subjected to SDS PAGE followed by western blot with 19780-1-AP (AMPD1-Specific antibody) at dilution of 1:300.



Immunohistochemical analysis of paraffin-embedded mouse skeletal muscle tissue slide using 19780-1-AP (AMPD1-Specific antibody) at dilution of 1:200 (under 10x lens). Heat mediated antigen retrieval with Tris-EDTA buffer (pH 9.0).



Immunohistochemical analysis of paraffin-embedded mouse skeletal muscle tissue slide using 19780-1-AP (AMPD1-Specific antibody) at dilution of 1:200 (under 40x lens). Heat mediated antigen retrieval with Tris-EDTA buffer (pH 9.0).



mouse skeletal muscle tissue were subjected to SDS PAGE followed by western blot with 19780-1-AP (AMPD1-Specific antibody) at dilution of 1:300 incubated at room temperature for 1.5 hours.